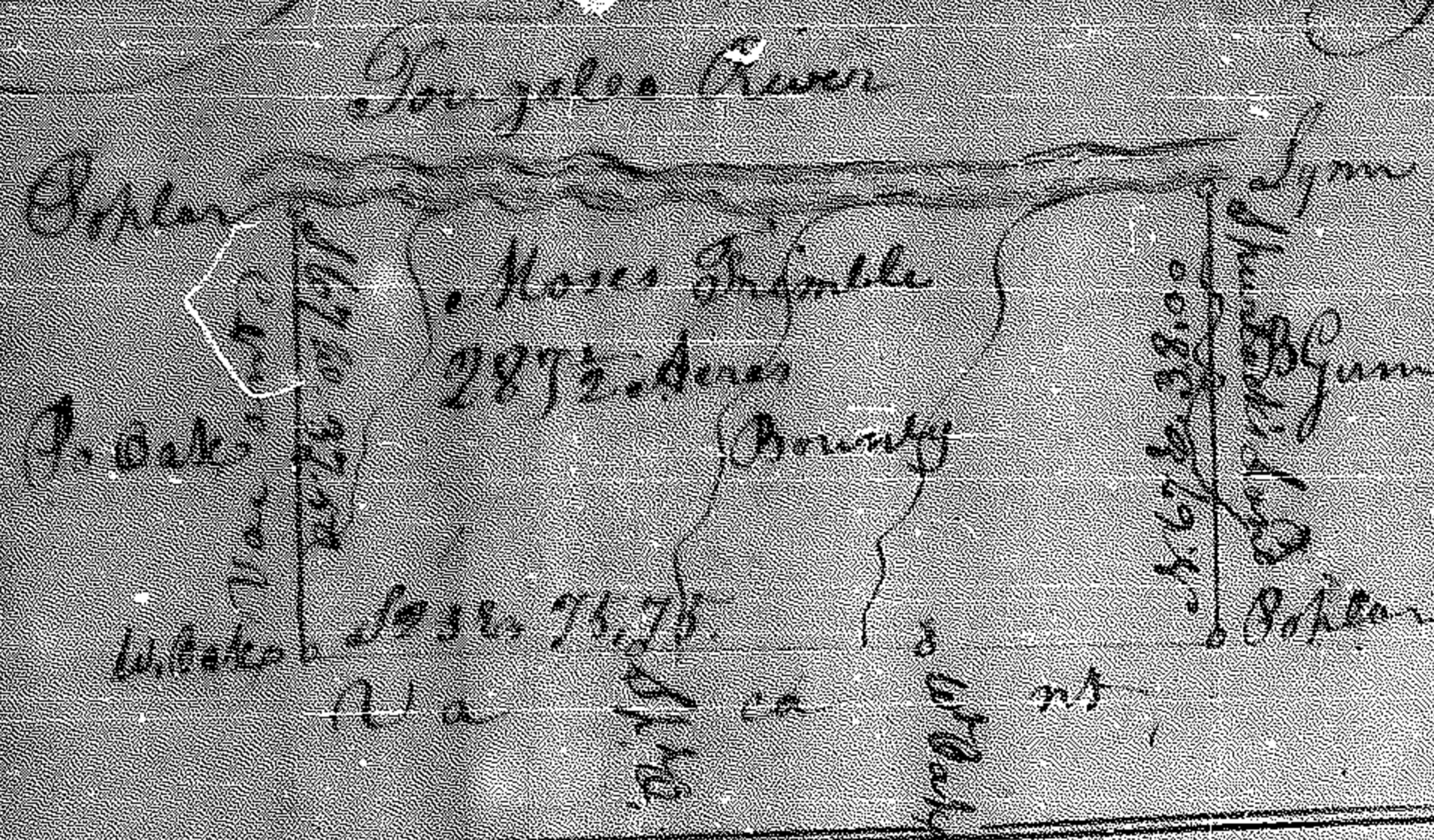


262

N. 793

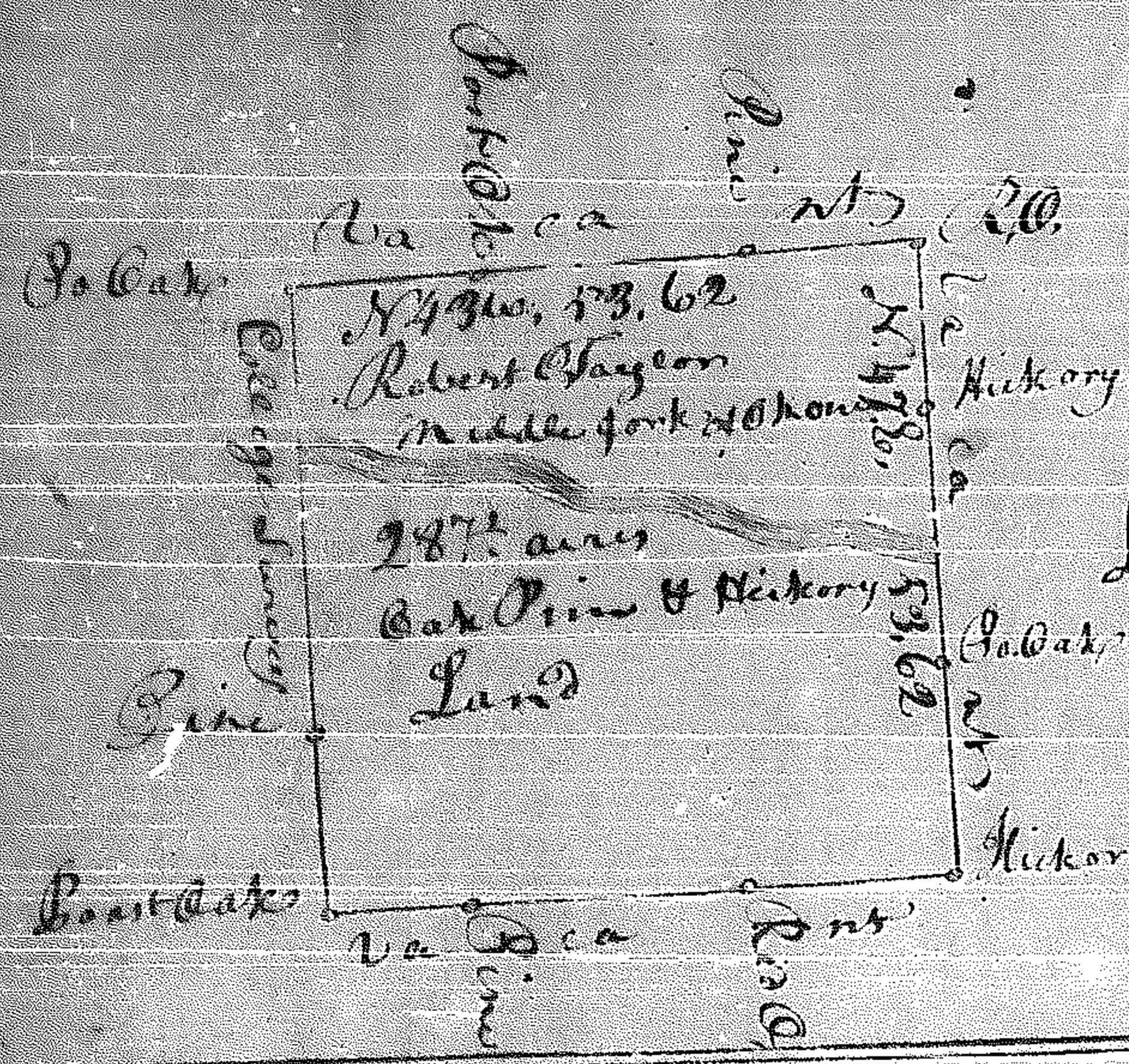
Franklin County



Surveyed by Virtue of a Warrant from the Hon^{ble} Governor
 & dated 19th July & Executed 22^d of the same 1784 by

Thomas Payne

Scale of 20 chains to an Inch



Franklin County

Surveyed by Virtue of a Warrant from the Honorable
 John Habersham Esquire President of the Executive Council
 dated 17th May & Executed 25th June 1784

Thomas Scott D. Suro.

Dest. N. Warrant N. 102

Scale of 20 chains to an Inch



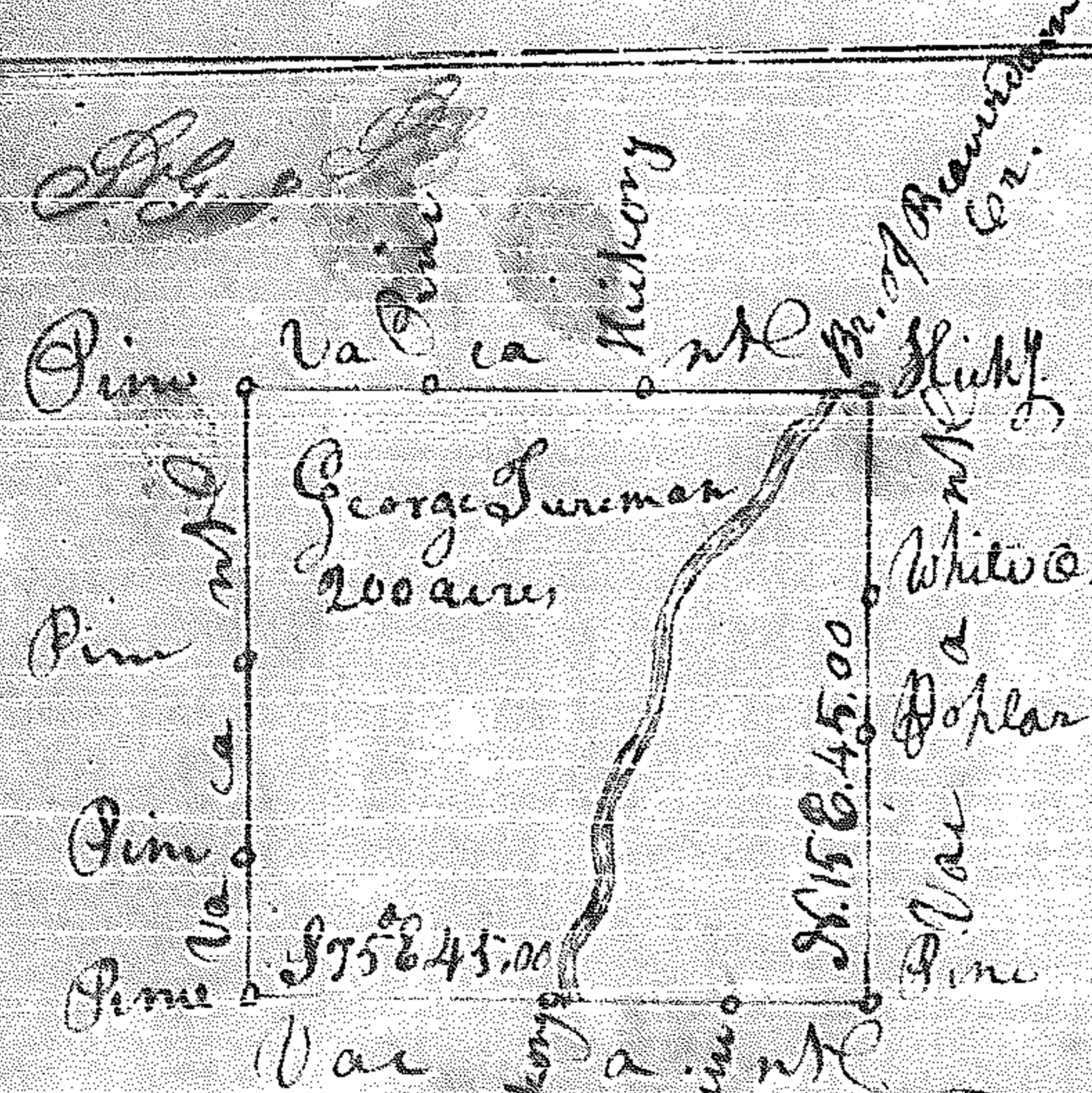
Franklin County

Surveyed by Virtue of a Warrant from under the hand
 of the Honorable John Habersham Esquire President
 of the Executive Council dated 17th May & Executed 15th
 of June 1784

Thomas Gregg D. Suro.

Dest. N. Warrant N. 325

Scale of 20 chains to an Inch



Wilkes County

Surveyed by Virtue of a Warrant from the Hon^{ble}
 Benjamin Catering Esquire Senior Justice Presiding at
 a Land Court held in said County dated 10th November
 & Executed 10th December 1783

Thomas Gregg D. Surveyor

Scale of 20 chains to an Inch

N. 796