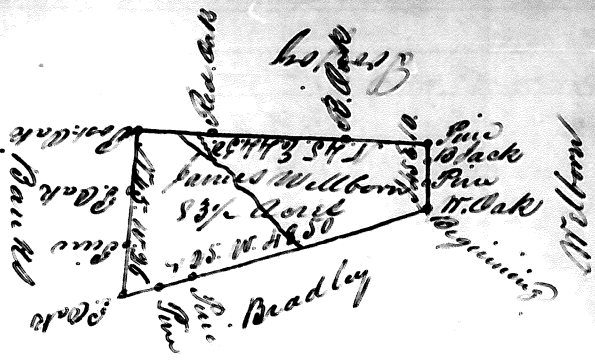


Know Land

Georgia  
Jackson County

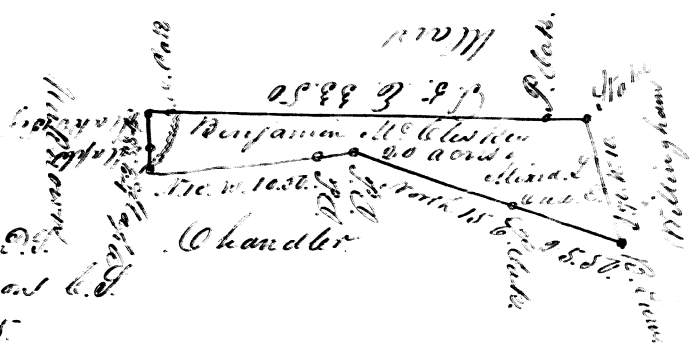
Warrant dated 1<sup>st</sup> and surveyed  
9<sup>th</sup> day Decr 1833  
By William Bell C.P.



Edwin Wellborn C.L.  
James Wellborn  
Scale of 20 Chains to an Inch

Georgia  
Jackson County

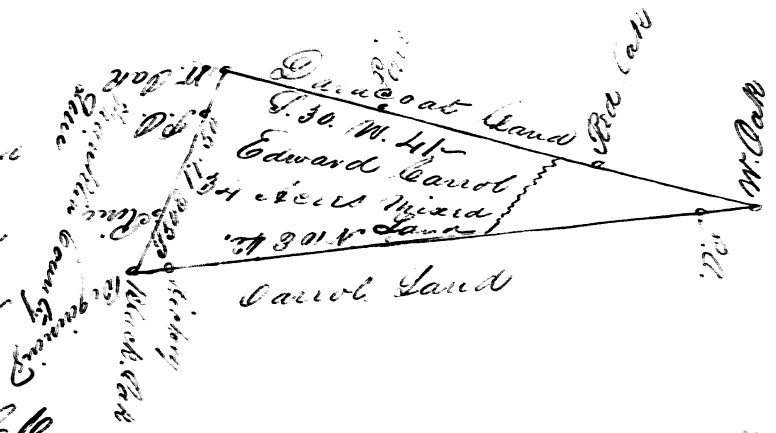
Warrant Dated 6<sup>th</sup> day  
Decr. 1834  
Surveyed 26<sup>th</sup> Octr 1834  
Executed By John L. Pittman C.P.  
Witnessed By Silman Harrison C.P.  
Advised 4<sup>th</sup> March 1835



Peter McCluskey C.L.  
James Bogg  
Scale of 10 Chains per Inch

Georgia  
Jackson County

Warrant dated 1<sup>st</sup> and  
surveyed 9<sup>th</sup> day of  
October 1827 for Edward  
Carroll  
By William Bell. C.P.



Elijah Thornton C.L.  
Edward Carroll  
Scale of 10 Chains to an Inch