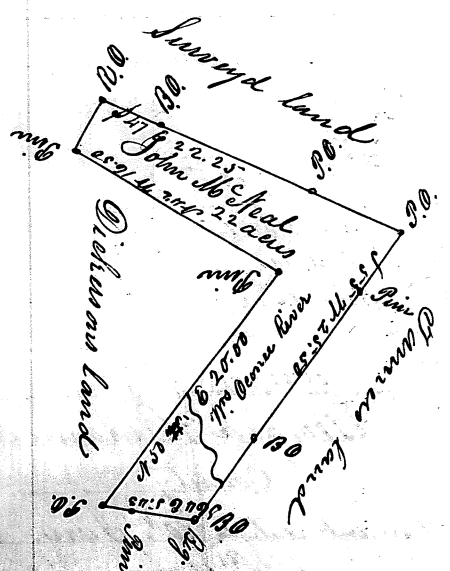


Georgia Emanuel County

Warrant dated 3rd July 1848.
 Surveyd 14th Oct. 1848.
 Advertised 16th Oct. 1848.

By James H. Edenfield C.S.
 H. Walker
 G. W. Hammock
Scale of 40 chs. to an inch



Georgia Hall County

Warrant dated 5th Oct. 1847.
 Surveyd 4th Feby. 1848.
 Advertised 10th Feby. 1848.

By John H. Hanson C.S.
 Robt Saps
 E. Dickson

Scale of 10 chs. to an inch

Georgia
 Co