

Georgia, *Tulloch* County.

Warrant dated 5th May 1851.

Surveyed 23rd Decem^r 1851.

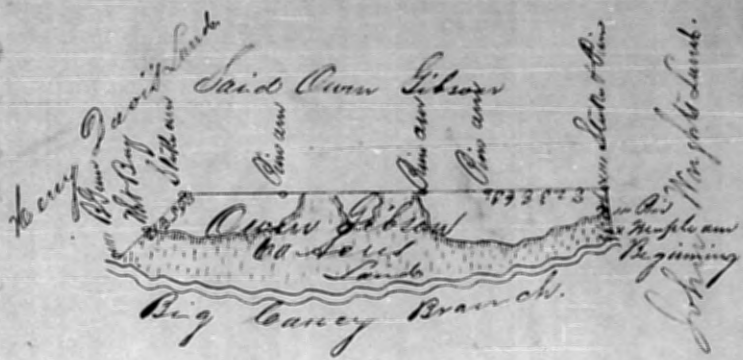
Advertised 5th Jan^y 1852.

By *D. S.*

Certified by *Adam Jones* C. S.

Crown Gibson
John Wright } C. C.

Scale of 20 Chains to an Inch.



Georgia, *Tulloch* County.

Warrant dated 3rd July 1854.

Surveyed 23rd August 1854.

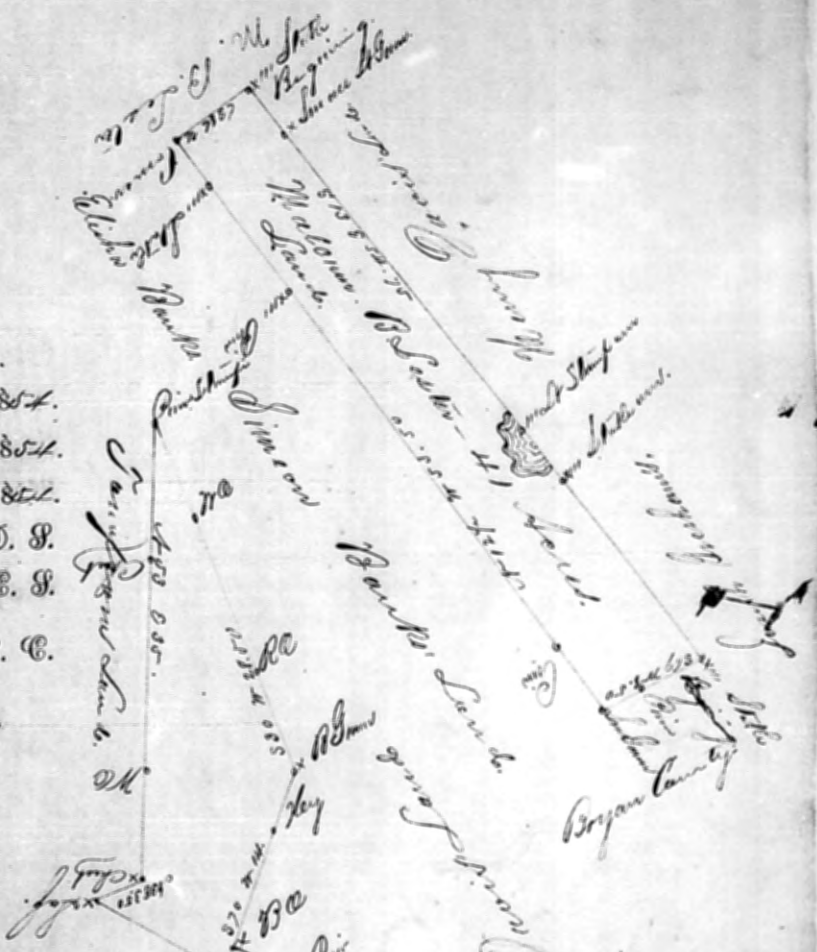
Advertised 9th Octob^r 1854.

By *Adam Jones* D. S.

Certified by *Witcher Lewis* C. S.

Elisha Banks
L. C. Banks } C. C.

Scale of 10 Chains to an Inch.



Georgia, *Hall* County.

Warrant dated 3rd May 1853.

Surveyed 5th May 1853.

Advertised 6th May 1853.

By *D. S.*

Certified by *John W. Harrison* C. S.

Young Floyd
L. A. Floyd } C. C.

Scale of 10 Chains to an Inch.

