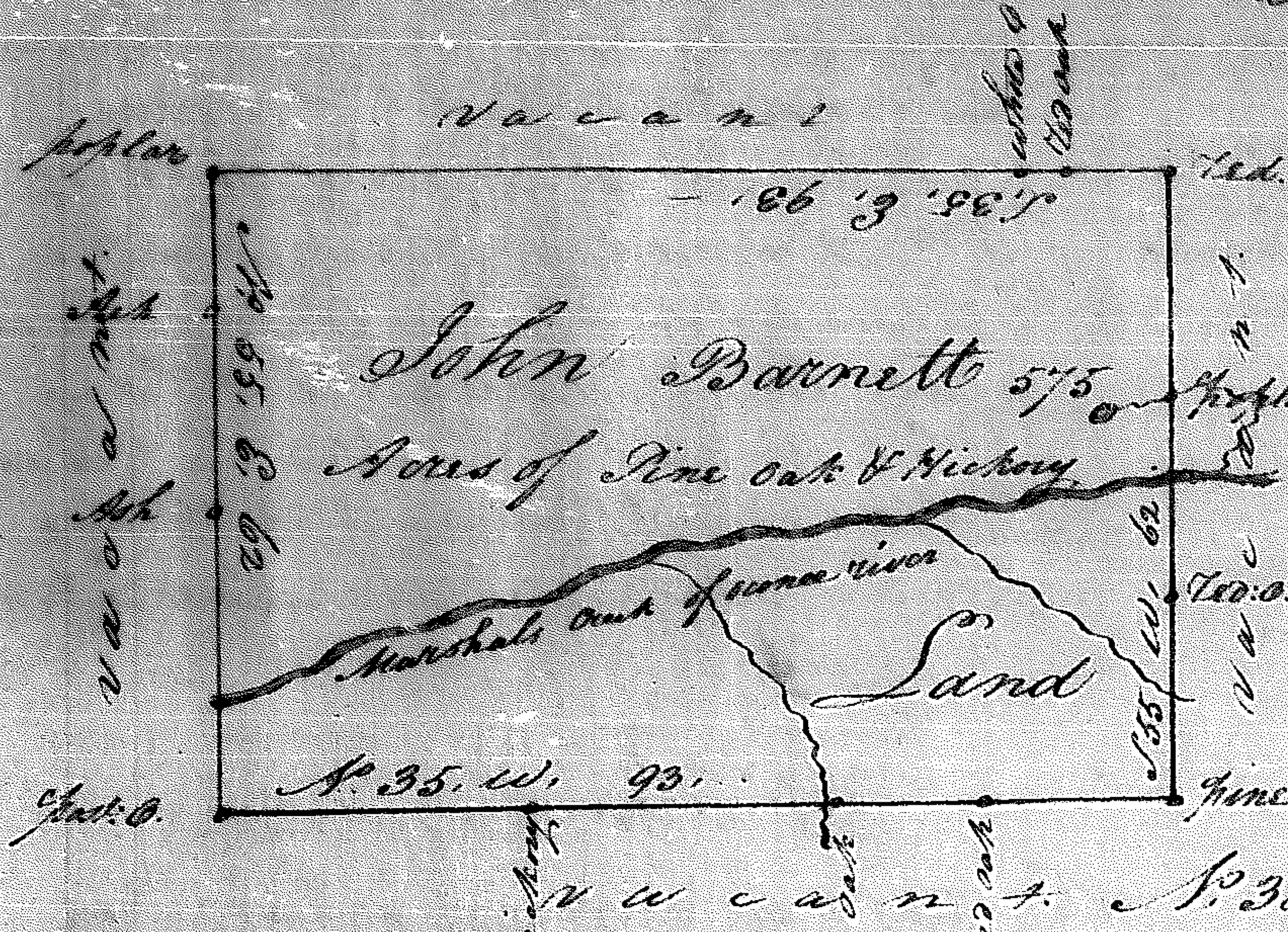
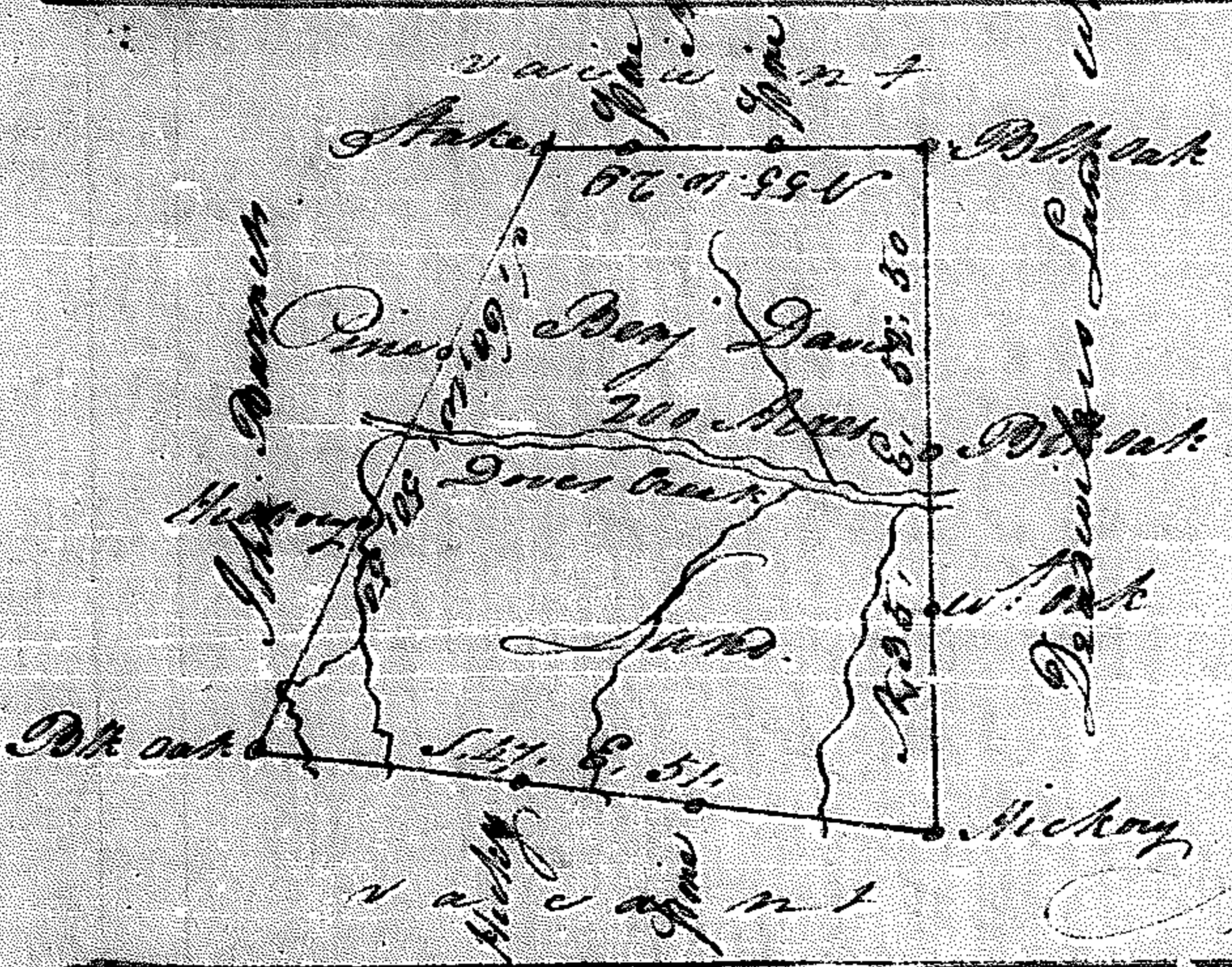


Franklin County

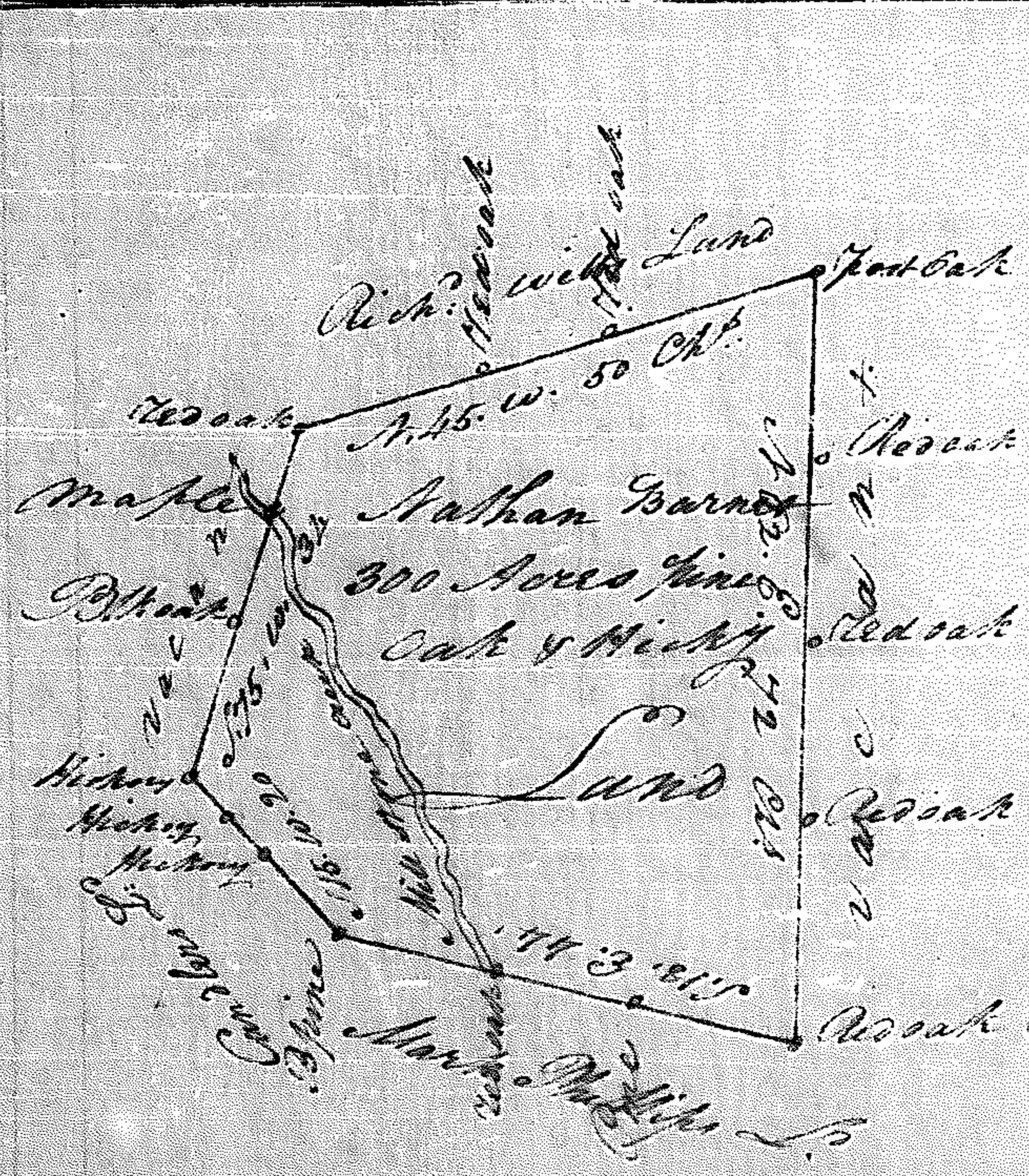


Surveyed by virtue of
 a warrant from under
 the hand of the Honble
 John Baverham Esq^r
 President of the Executive
 Council: dated the 17th of
 May 1732: & Executed the
 2^d of August following by
 Thomas Scott Esq^r Surveyor
 County Court: A 385
 Scale of 20 Chains to an
 Inch



Wilkes County

Surveyed by virtue of a warrant
 from under the hand of the Honble
 Stephen Heard Esq^r Senior Justice
 Presiding at a Land Court held in
 in the Said County: dated the 10th
 day of Sept^r 1734: & Executed the 25th
 of October following by Jn: Fergus
 on head right: Scale 20 Ch^s to an
 Inch



Wilkes County

Surveyed by virtue of a warrant
 from under the hand of the
 Honble Stephen Heard Esq^r
 Senior Justice, presiding at a
 Land Court held in Said County
 dated the 27th day of Apr^l 1734
 & Executed the 26th June following
 by Tho: Scott Dep^y Surveyor
 in Lieu of old warrant of Jn
 Barnett Dec^d: Scale 20 Ch^s to an
 Inch