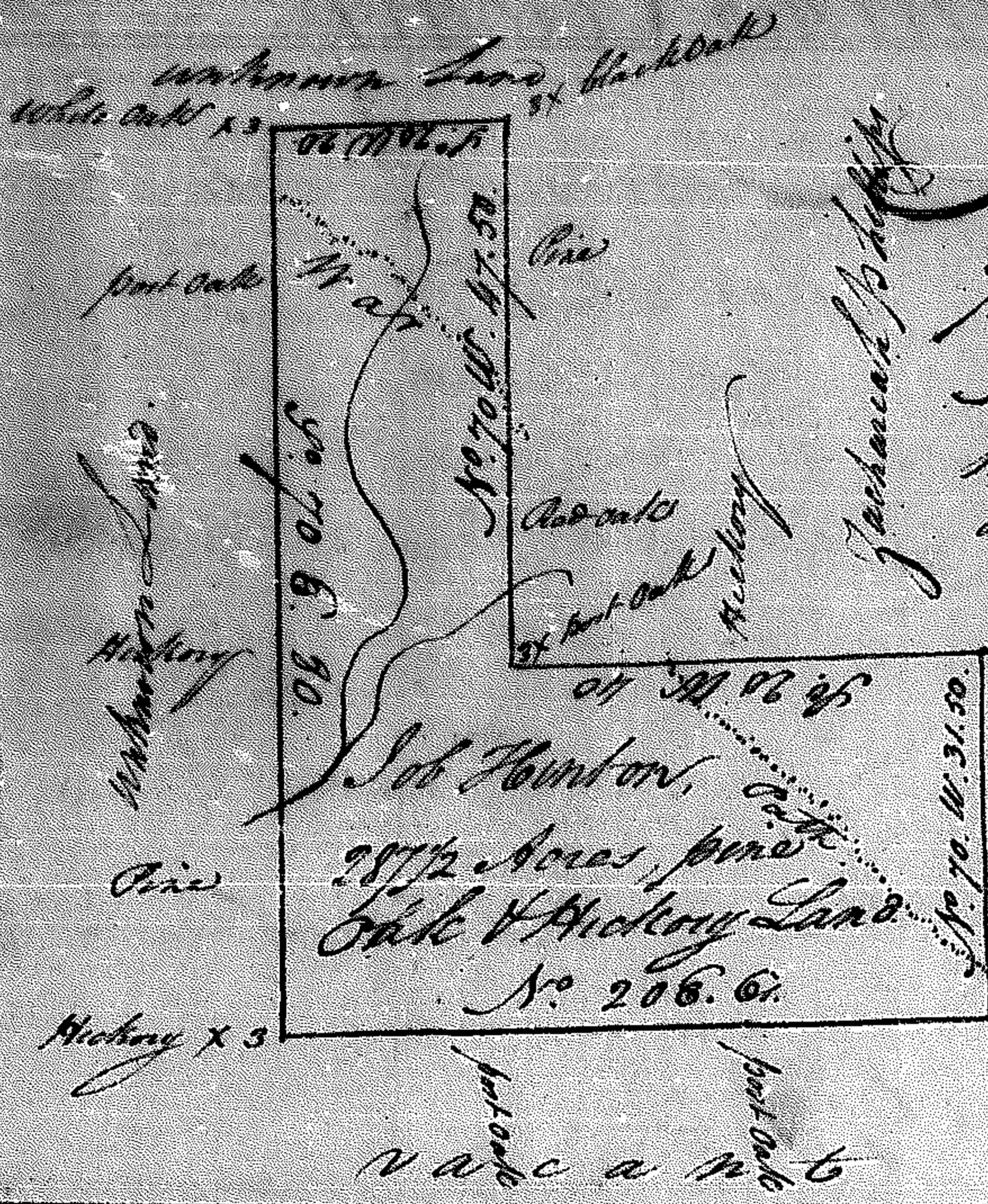


96

Washington County



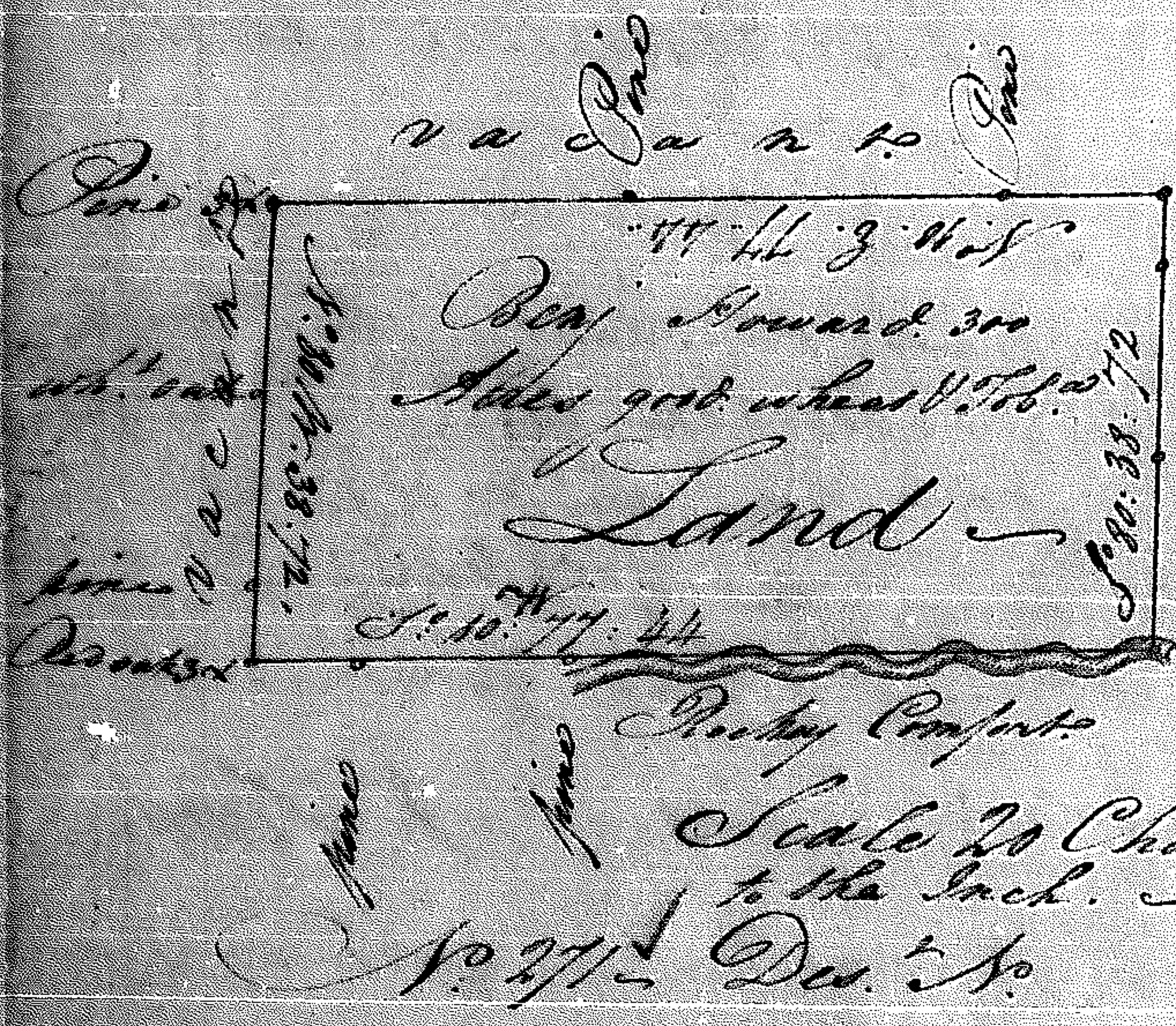
Surveyed by virtue of a warrant
 from under the hand of the Able
 John Habersham Esq. President of
 the Executive Council: dated the 14th
 day of May 1784 & Executed the 28 day
 of June following by James Farley
 S^r. Surveyor

No. 270

Scale of 20 Chains to the Inch

Dist. No. 5

Wilkes County



Surveyed by virtue of a
 warrant from under the hand
 of the Honble Abraham
 Bedell senior Justice presiding
 as a Land Court held
 in said County: dated the
 15 day of February 1784 and
 Executed the 14th day of
 March following by J. Farham
 Surveyor

Scale 20 Chains to the Inch

No. 271 Dist. No.

Franklin County



Surveyed by virtue of a warrant
 from under the hand of the Honble
 John Houston Esq. Gov. Capt. Gen.
 dated the 14th day of Septem:
 1784 & Executed the 5th Instant
 by Thomas Payne, Surveyor

No. 272 Scale 25 Chains to the Inch