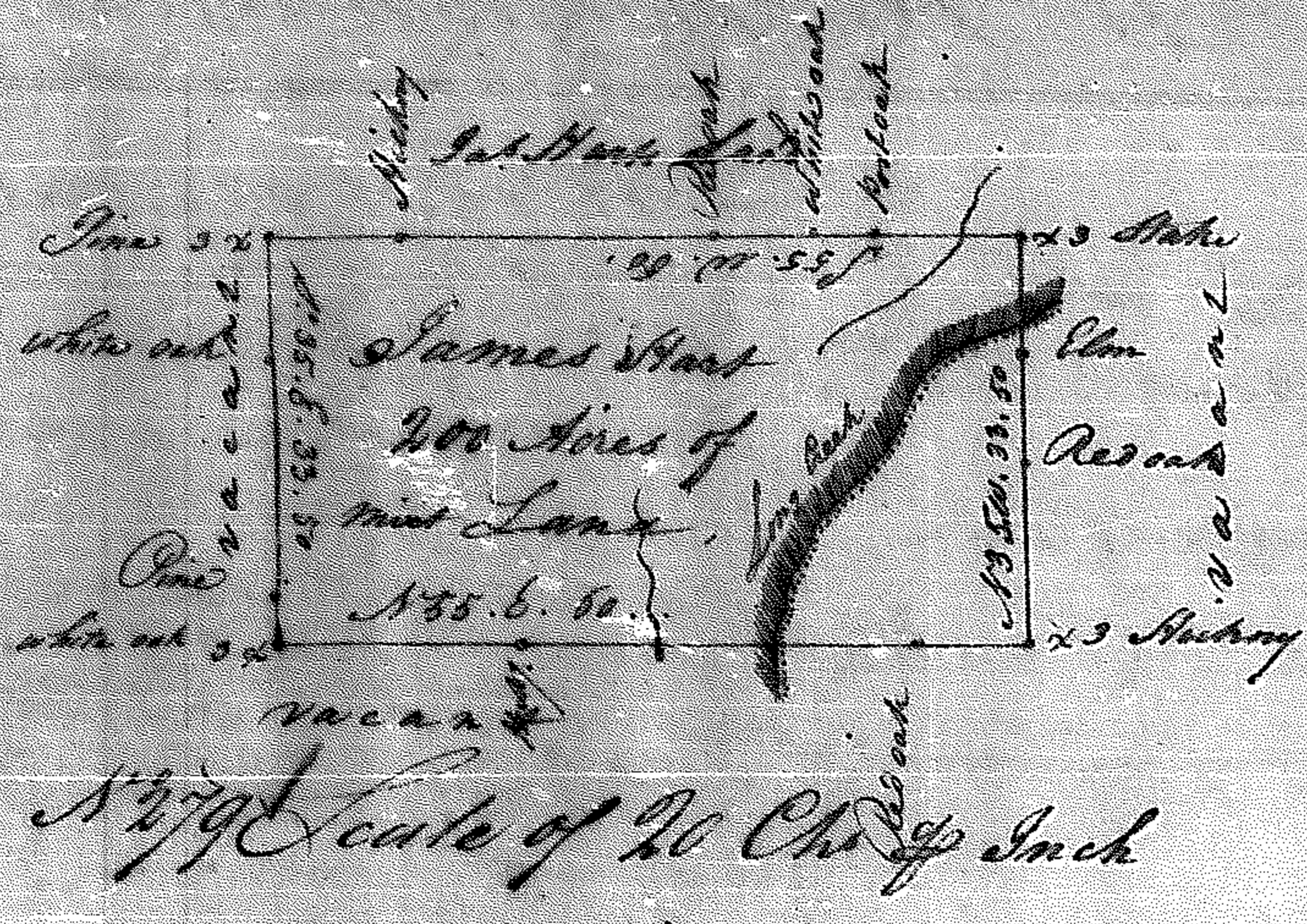
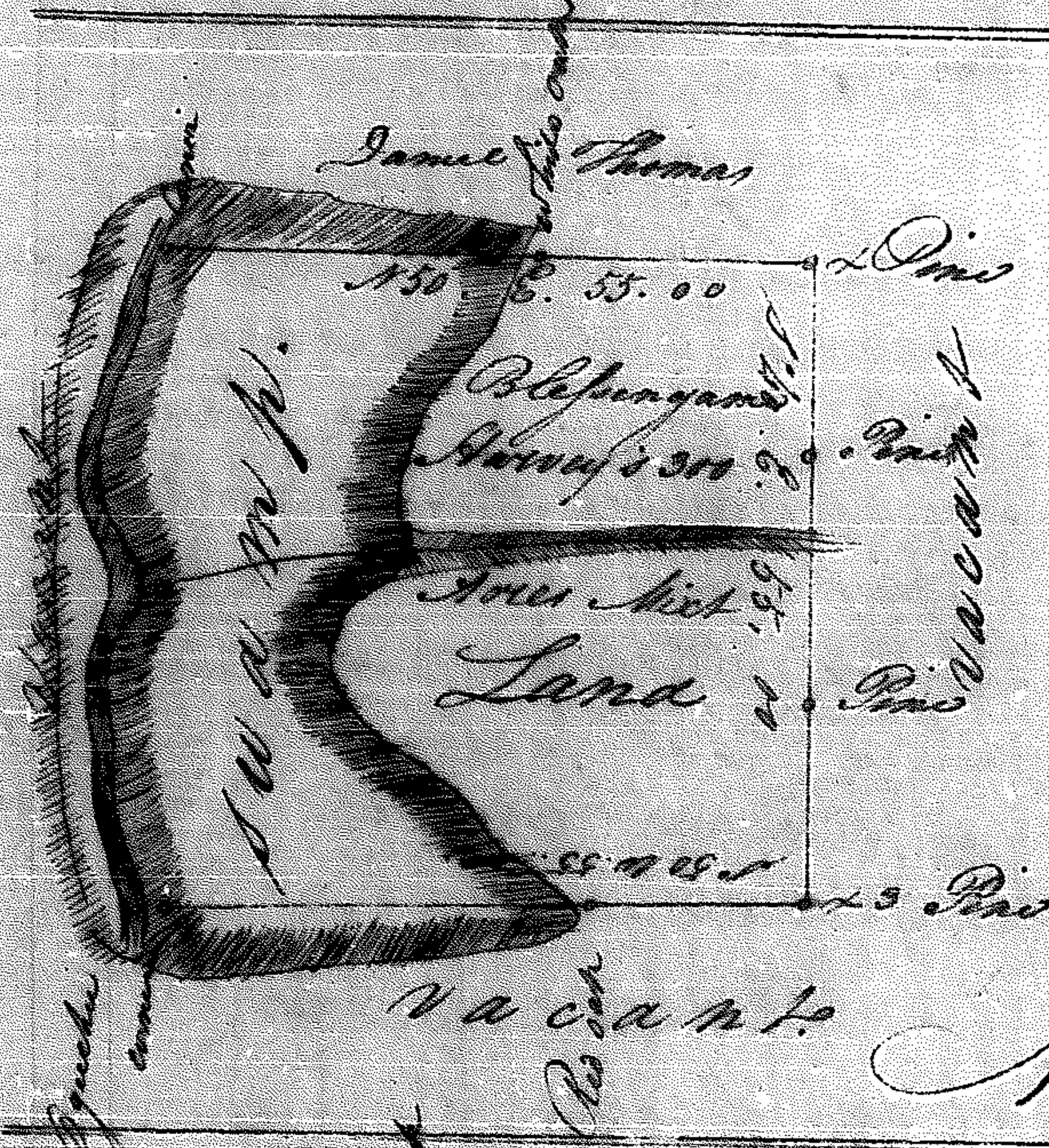


Wilkes County 99

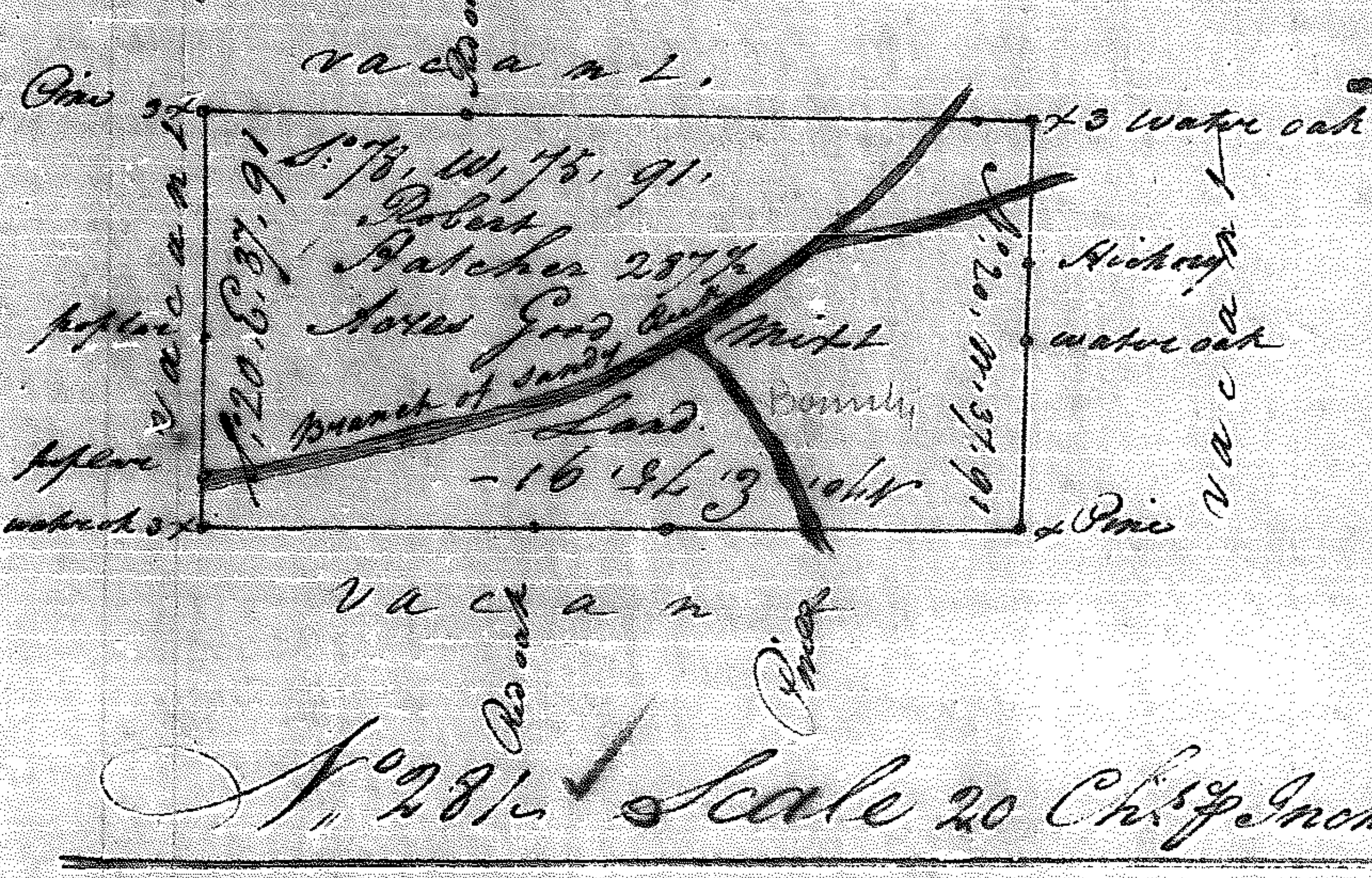


Surveyed by virtue of a warrant from under the hand of the Hon^{ble} J. Lamar Esq: senior Justice Presiding at a Land Court held in the said County: dated the 4th day of March 1784. & Executed the 11th day following, by James M. Lamar Surveyor



Burke County

Surveyed by virtue of a warrant from under the hand of the Hon^{ble} David Emanuel Esq: senior Justice Presiding at a Land Court held in said County: dated the 3rd day of November 1783, & Executed the 14th day of January 1784 by Thomas Lewis Coty. Sen^r.
Scale 20 Chains of Inch.



Franklin County

Surveyed by virtue of a Warrant from under the hand of the Hon^{ble} John Rowson Esq: Gov^r Cap^t Gen^l of the State dated the 10th day of July 1784. & Executed the 19th day of August following, by Egel Offutt Surveyor.