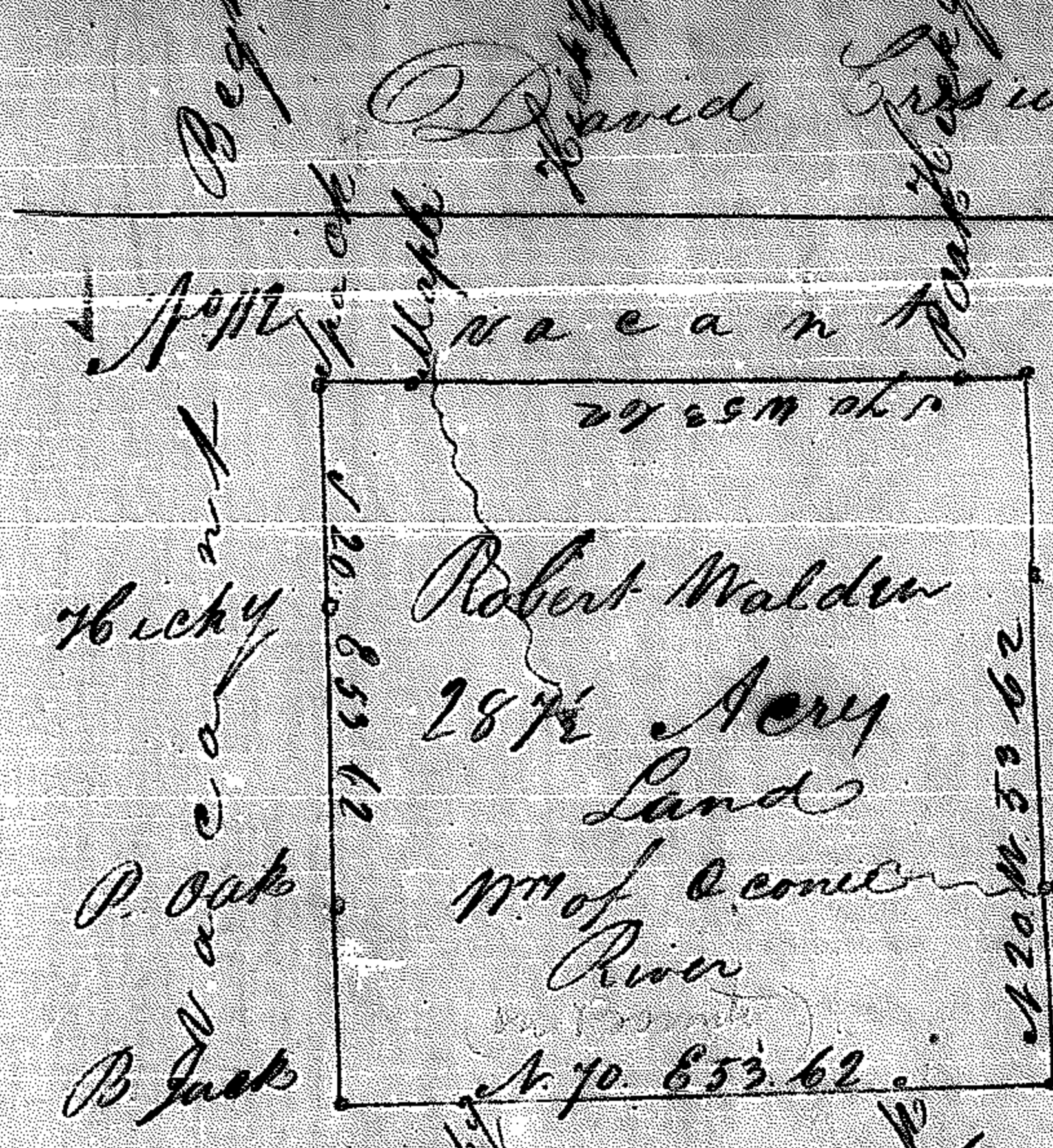
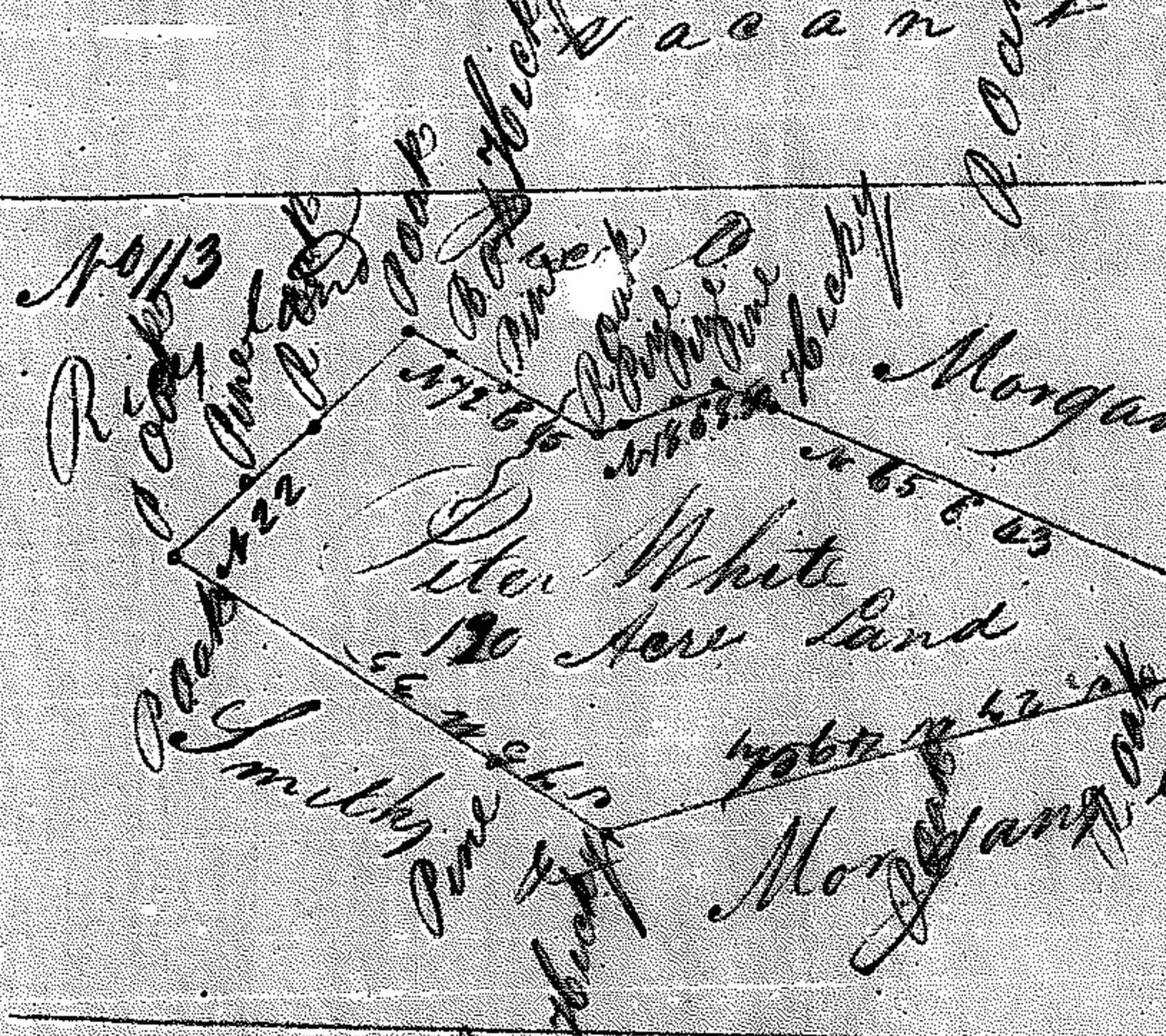


Franklin County
 Warrant dated the 26th
 May 1784 Surveyed 9th
 October 1784
 By C. Offutt ds
 Certif. By Mal Jones C.S.
 Ado²⁵ Decem^r 1798
 Foot. In Deprest
 M. Reborn C.S.
 Sea 20 chs p^r Inch

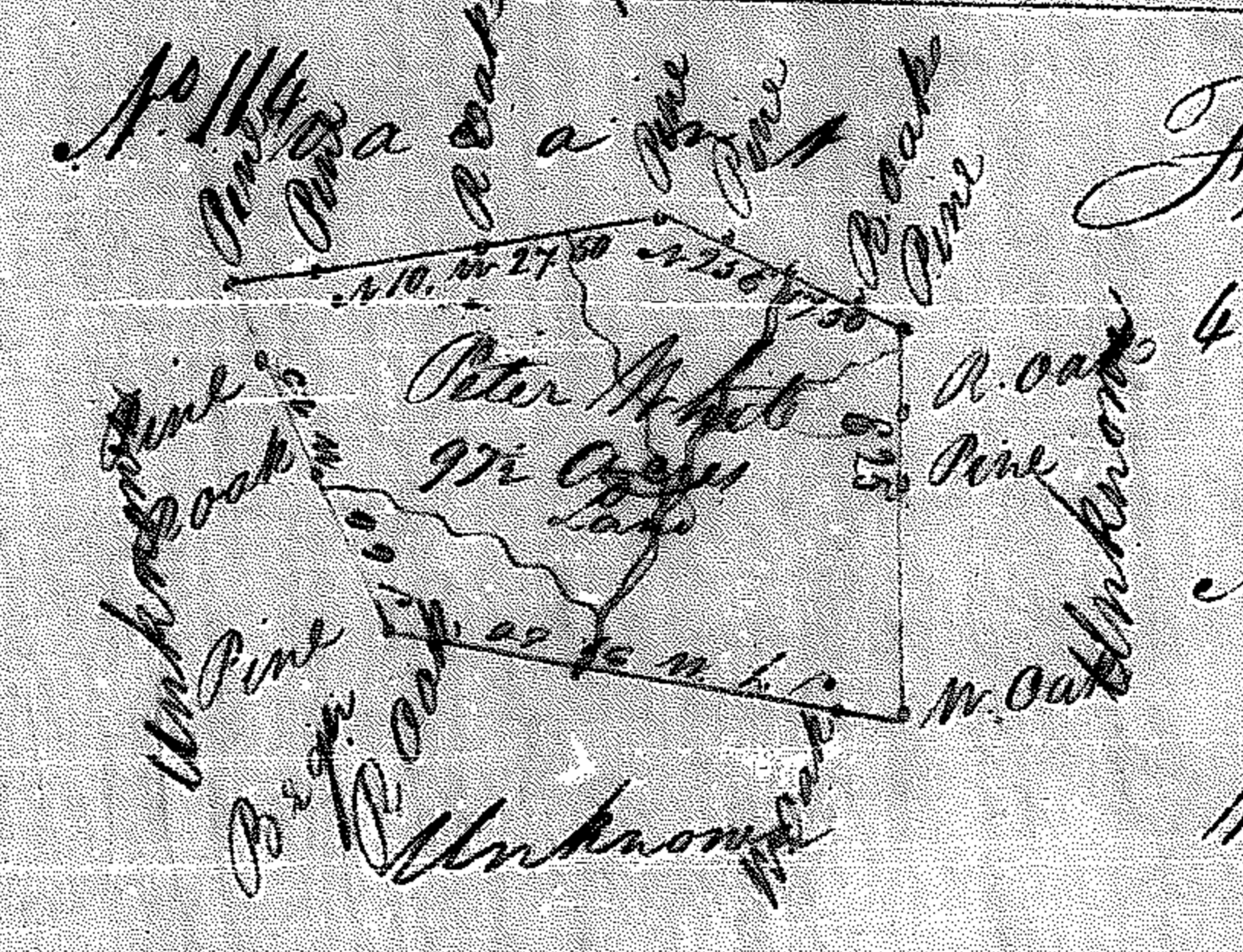


Franklin County,
 Warrant dated the 17th May 1784
 Surveyed 11th October 1784
 By C. Offutt ds
 Certif. By Mal Jones C.S.
 Ado²⁵ Decem^r 98
 In Deprest?
 M. Reborn C.S.
 Sea 20 chs p^r Inch

C-5 217



Franklin County, Warrant dated
 the 4th January 1796 Surveyed 7th March
 1797
 By James T. Little ds
 Certif. By Jas Wyly C.S.
 Ado¹⁵ Novem^r 1797
 J. Grummett?
 Peter White C.S.
 Sea 20 chs p^r Inch



Franklin County, Warrant dated the
 4th January 1796. Surveyed 12th Jan^y 1796
 By Jas Wyly C.S.
 Ado¹⁵ Jan^y 1796
 P. White C.S.
 Sea 20 chs p^r Inch