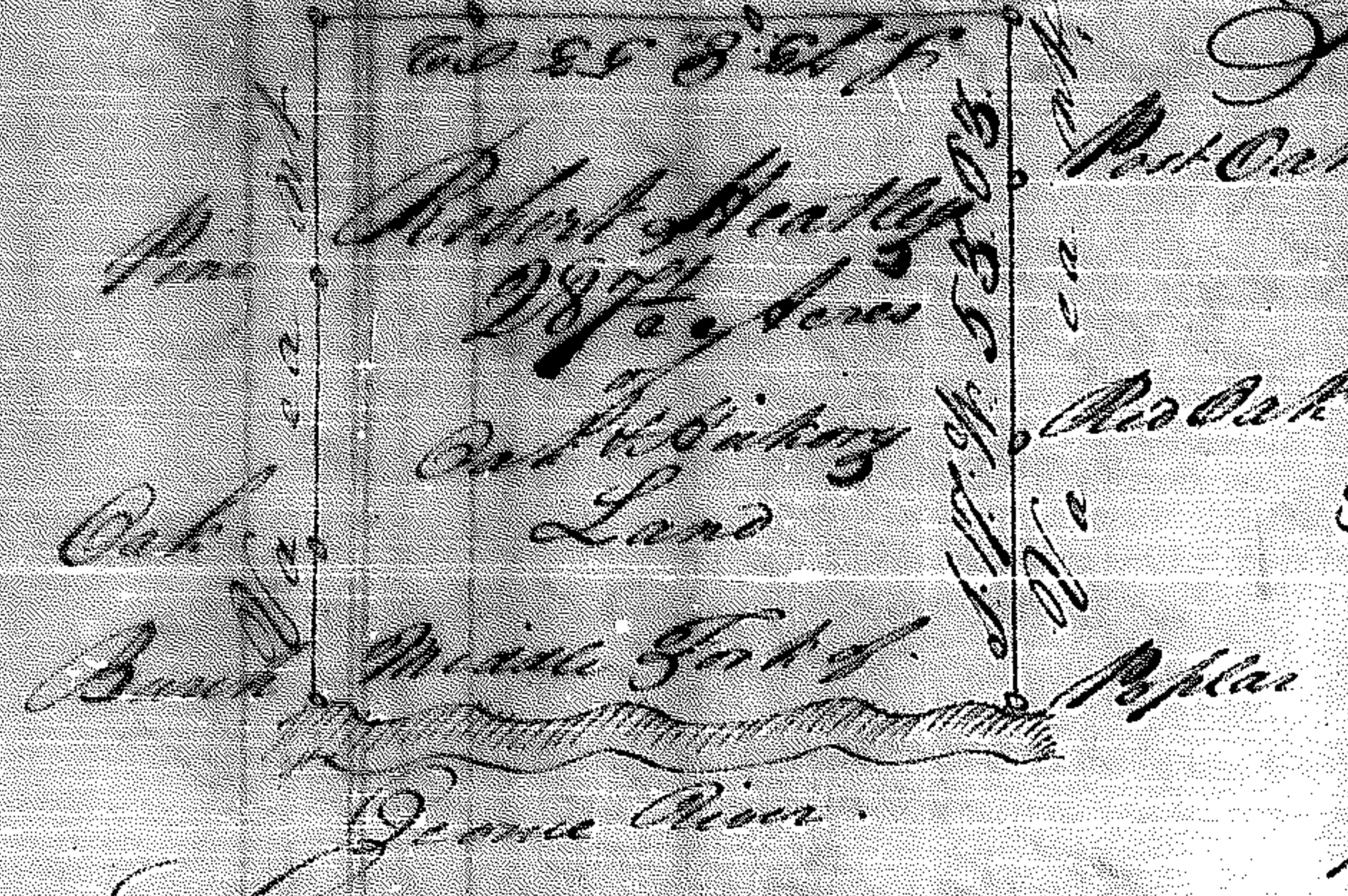


*Georgia*

*Franklin County*



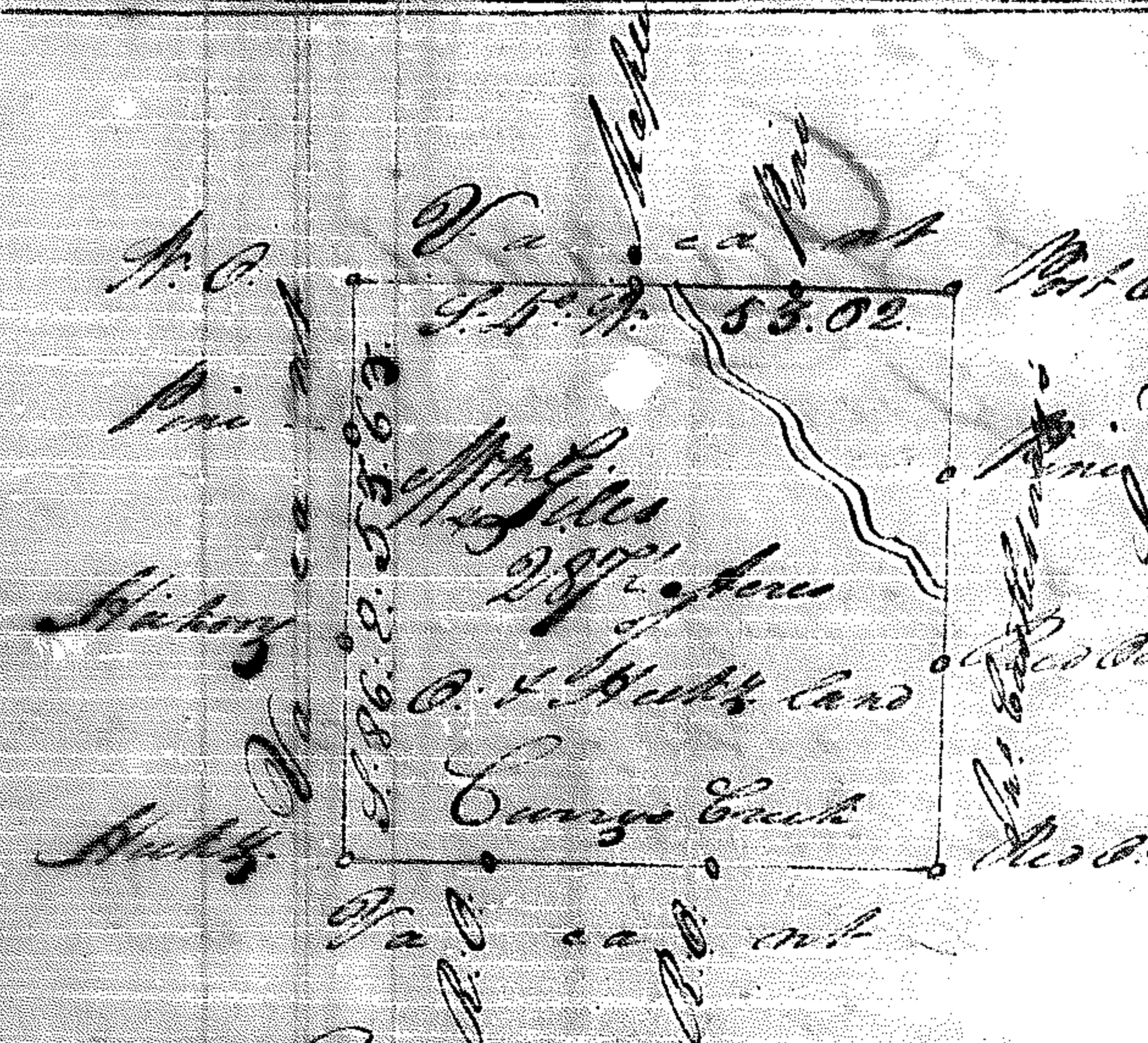
Surveyed by Virtue  
 of a warrant from under  
 the hand of the Honorable  
 John Habersham, Esquire,  
 President of the Executive  
 Council dated the 20<sup>th</sup> day  
 of May & Executed the 11<sup>th</sup> day  
 of June 1784 by  
 Tho: Scott Dep. Sur

*Pin Oak*  
*Oak*  
*Bank*  
*Miss Galt*  
*George River*  
 Scales of 20 Ch. Mr. Smith.  
 County!

No 17

*Georgia*

*Franklin County*



Surveyed by Virtue of  
 a warrant from under the  
 hand of the Honorable John  
 Habersham, Esquire, President  
 of the Executive Council dated  
 the 21<sup>st</sup> day of May and  
 Executed the 25<sup>th</sup> day of  
 June 1784 by  
 Tho: Scott Dep. Surveyor

*Pin Oak*  
*Hickory*  
*Hickory*  
*at 53° 02'*  
*at 53° 02'*  
 Scales of 20 Chains Mr. Smith.  
 County!

No 18