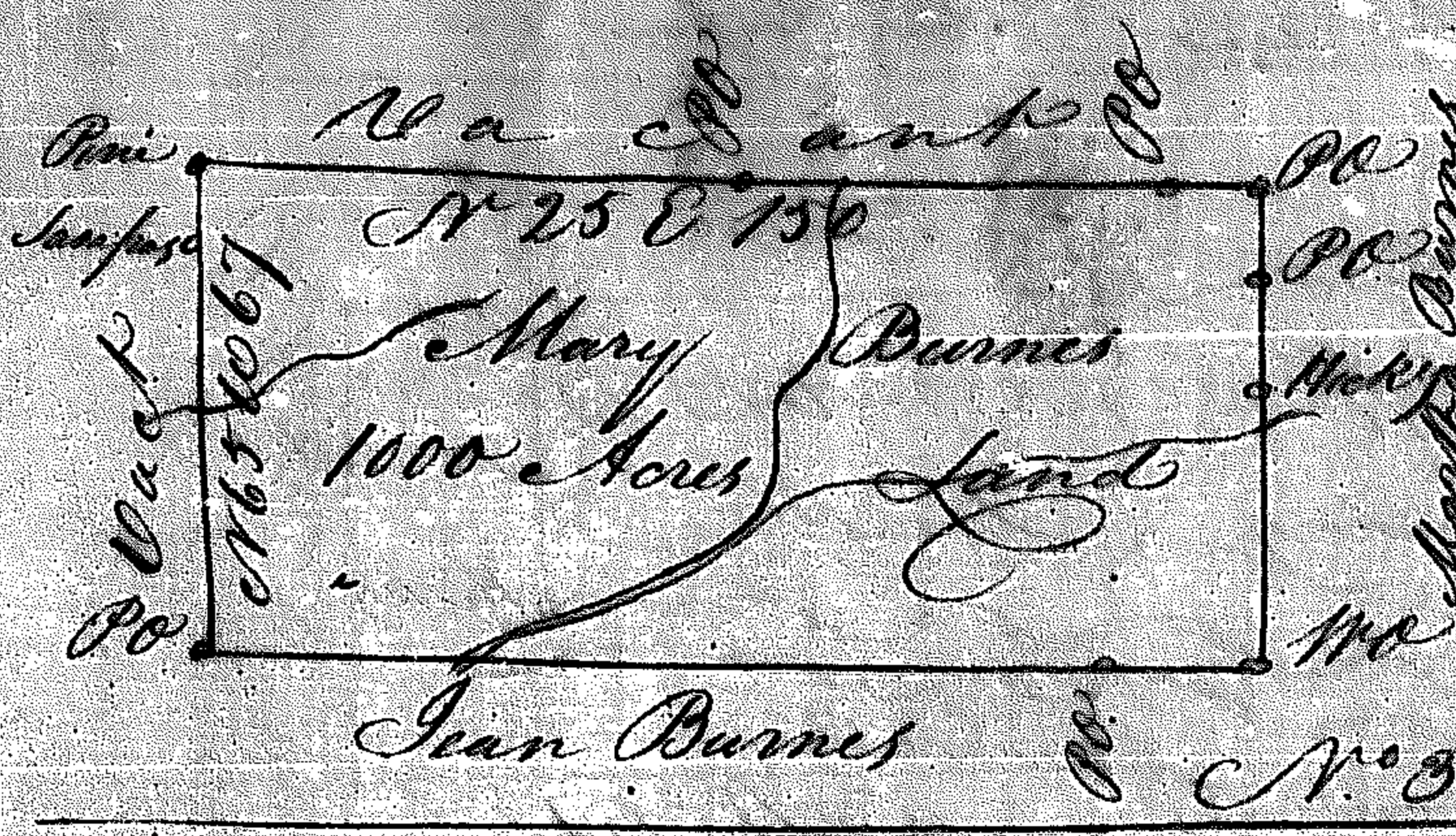
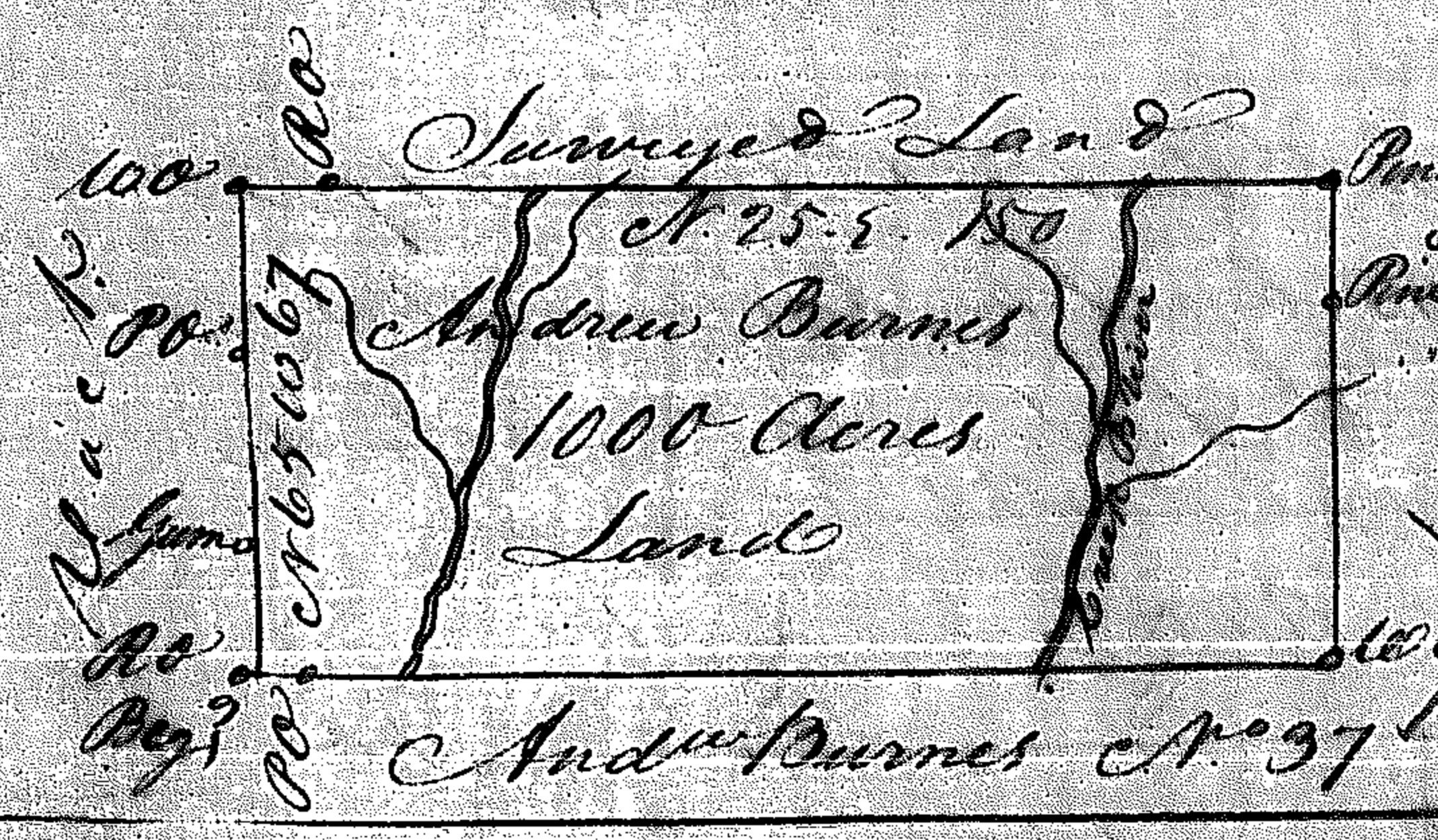




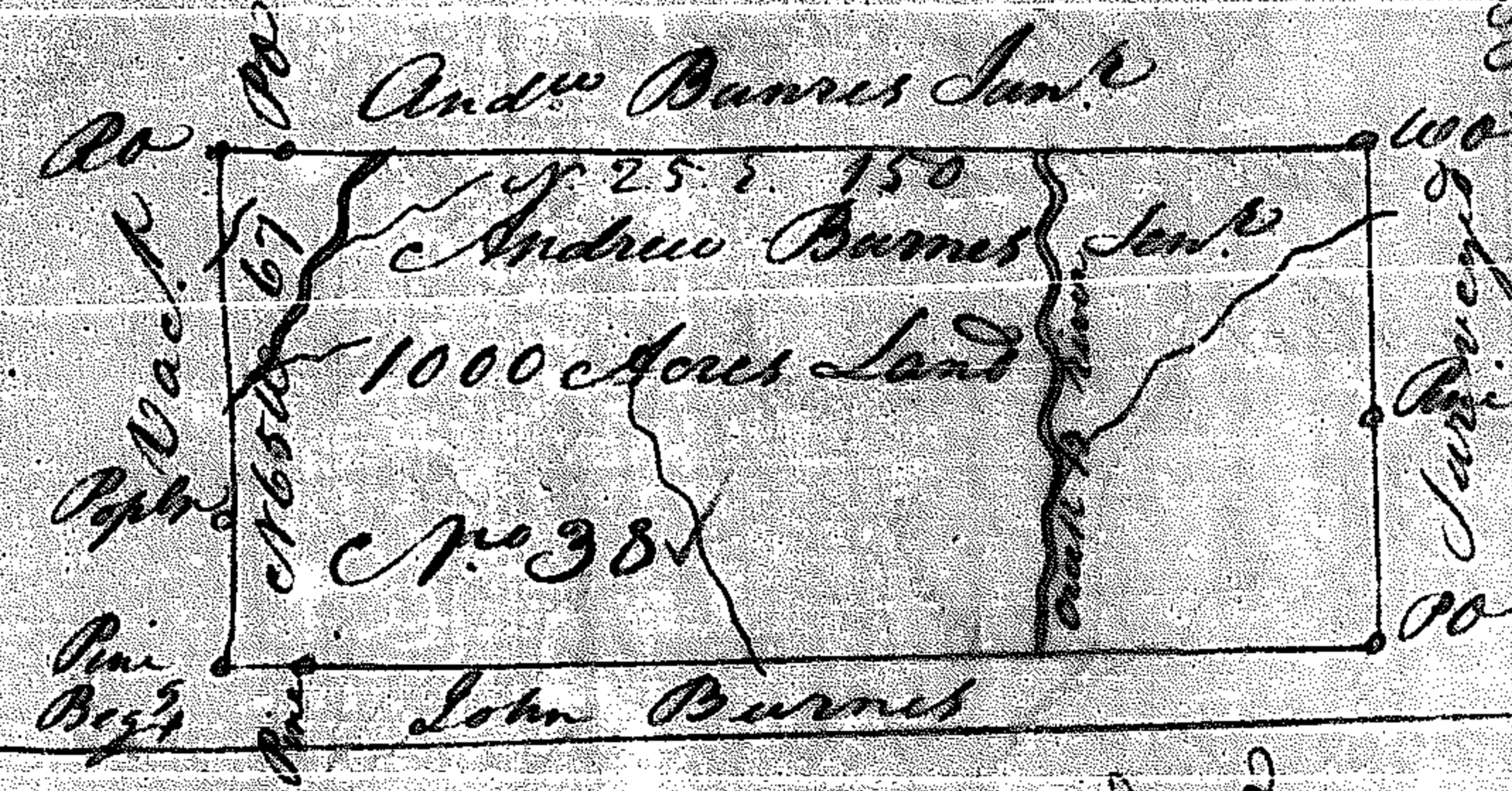
Franklin County  
 Warrant Dated 28<sup>th</sup>  
 July 1789 Surveyed 30<sup>th</sup>  
 July 1789 by D Campbell  
 A. S. Certif. by M. Gorham  
 C. S. Sea: 40 Chs & Inchs  
 No 35



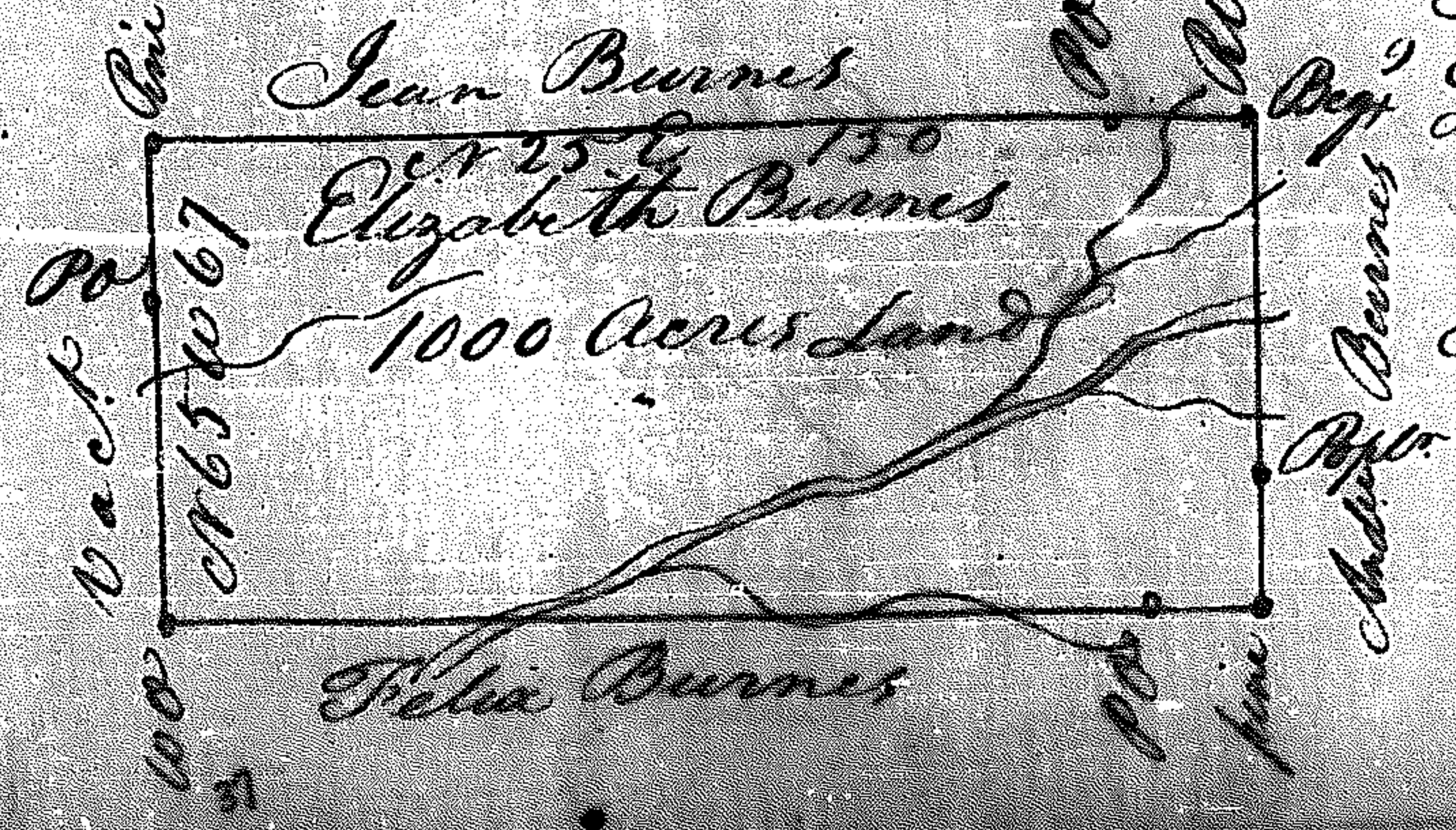
Franklin County  
 Warrant Dated 6<sup>th</sup> Octo  
 1789 Surveyed 8<sup>th</sup> Octo.  
 1789 by D Campbell & S  
 Certif. by M. Gorham  
 C. S. Sea: 40 Chs & Inchs  
 No 36



Franklin County  
 Warrant Dated 28<sup>th</sup>  
 July 1789 Surveyed 30<sup>th</sup>  
 July 1789 by D Campbell  
 A. S. Certif. by M. Gorham  
 C. S. Sea: 40 Chs & Inchs  
 No 37



Franklin County Warrant  
 Dated 28<sup>th</sup> July 1789  
 Surveyed 30<sup>th</sup> July 1789  
 by D Campbell & S  
 Certif. by M. Gorham C. S.  
 Sea: 40 Chs & Inchs



Franklin County Warrant  
 Dated 6<sup>th</sup> Octo. 1789 Surveyed  
 8<sup>th</sup> Octo. 1789 by D Campbell  
 A. S. Certif. by M. Gorham  
 C. S. Sea: 40 Chs & Inchs  
 No 39