

Franklin County

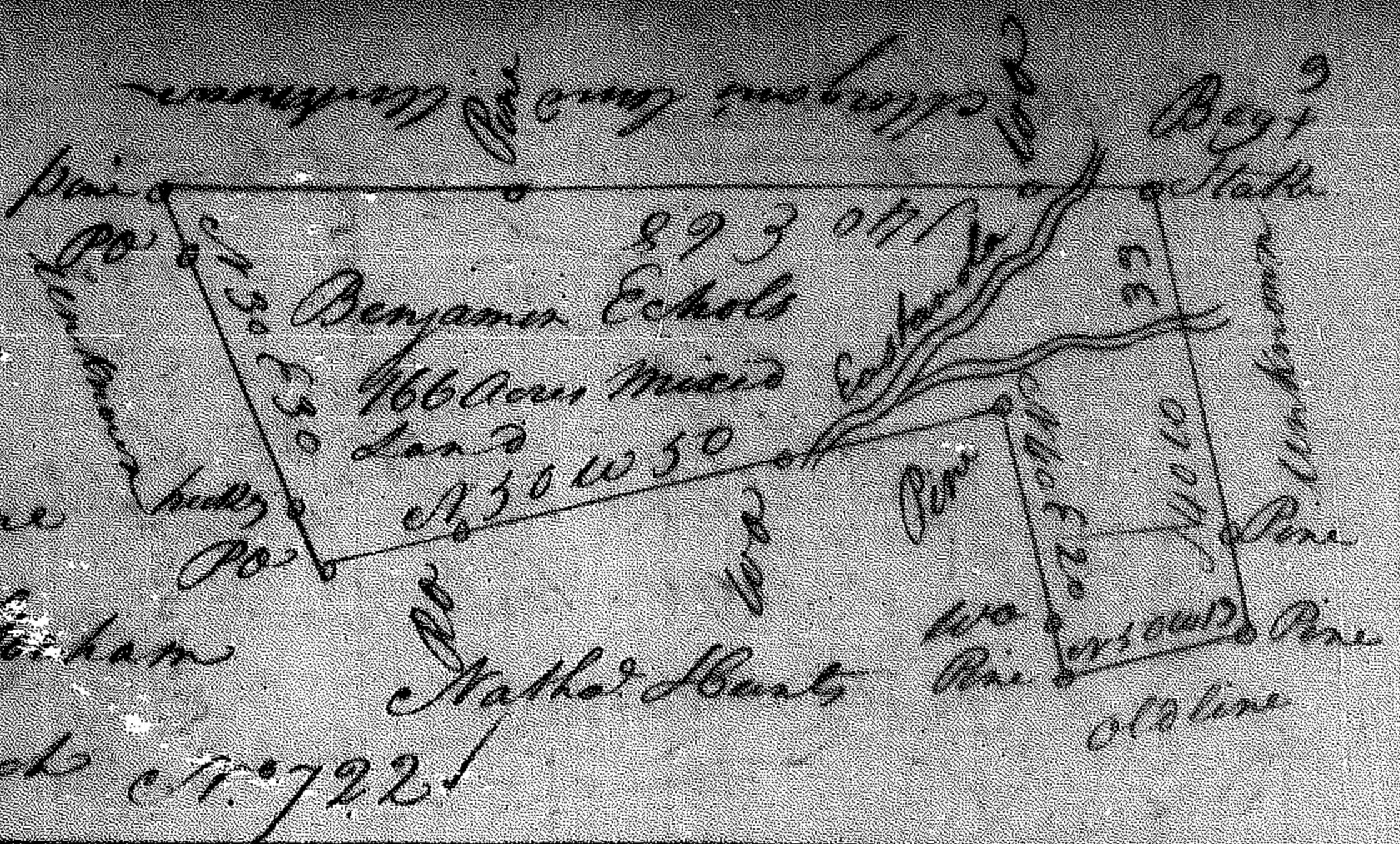
Warrant Dated 5<sup>th</sup> Octo

1789 Surveyed 20<sup>th</sup> Octo

1789 By Nathaniel Payne

D.S. Certified By M. Gorham

C.S. Sec. 20 Ch. & Inch No. 722



Franklin County Warrant

Dated 5<sup>th</sup> June 1785 Surveyed

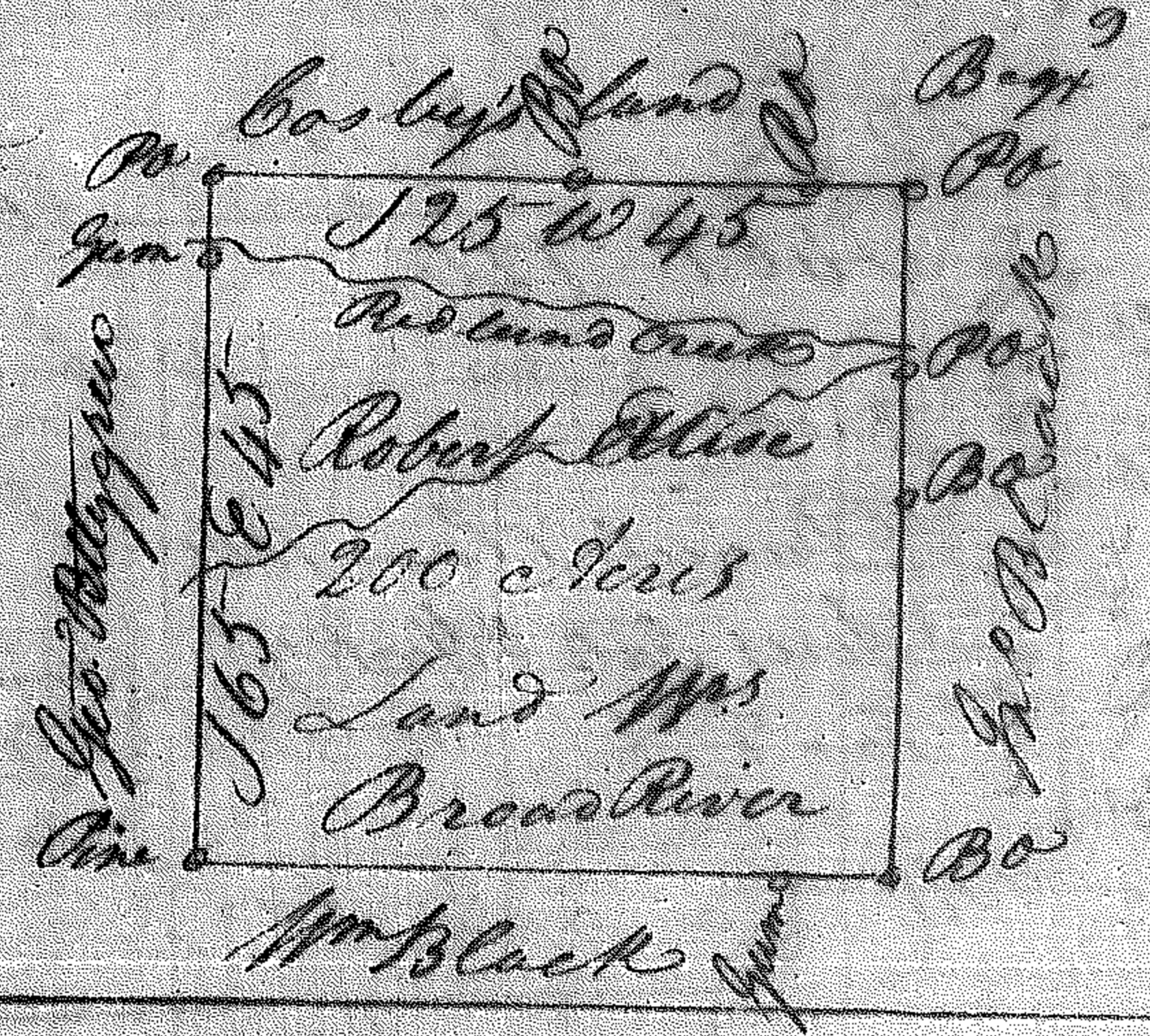
25<sup>th</sup> August 1790 by Jno

Templeton D.S. Certified By

J. Gorham C.S.

Sec. 20 Ch. & Inch

No. 723



Franklin County Warrant

Dated 7<sup>th</sup> May 1785 Surveyed

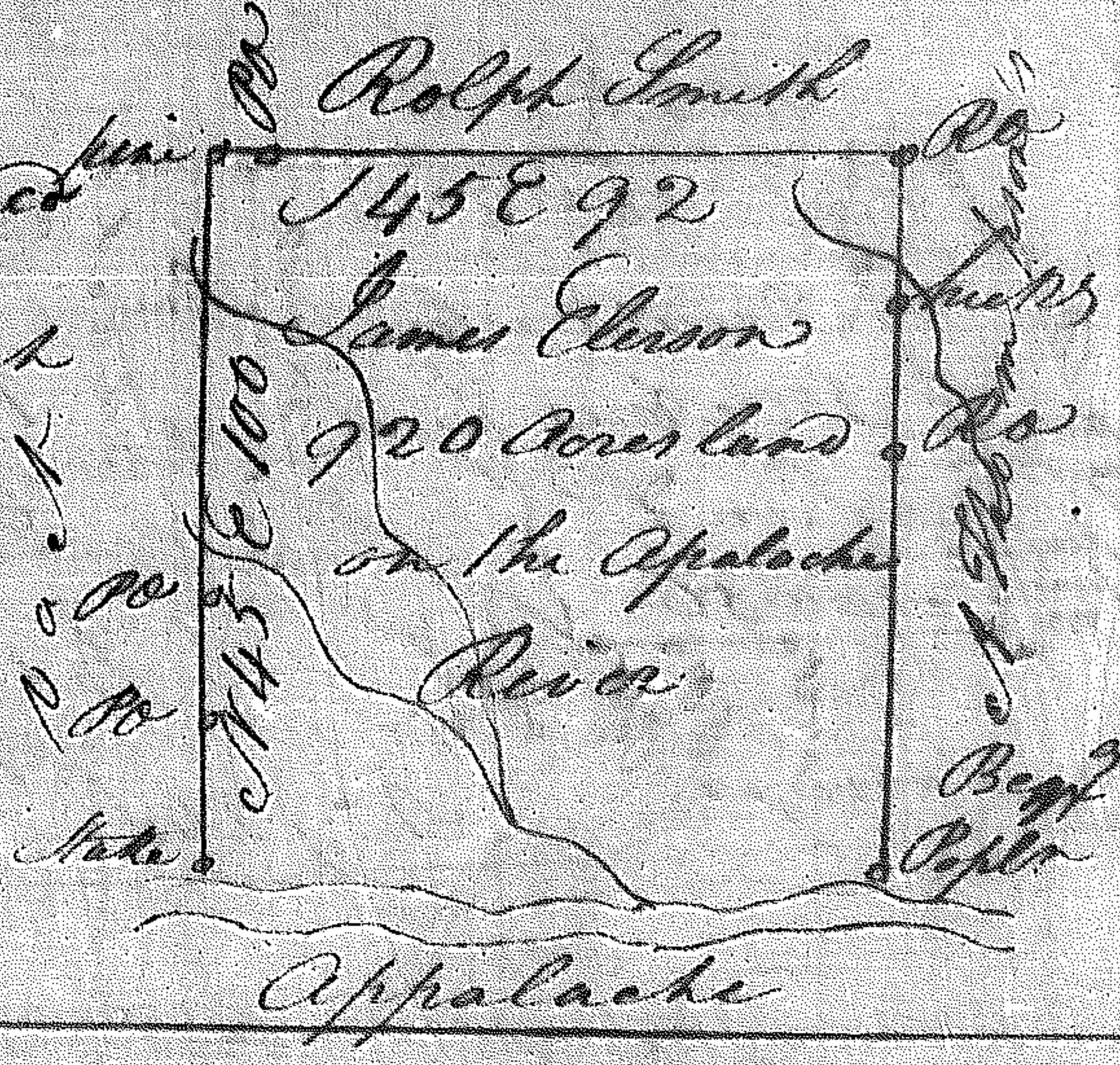
28<sup>th</sup> May 1785 by Micajah

Williamson D.S. Certified

by J. Gorham C.S.

Sec. 40 Ch. & Inch

No. 724



Franklin County Warrant

Dated 4<sup>th</sup> May 1785

Surveyed 20<sup>th</sup> July 1785

by M. Williamson D.S.

Certified By J. Gorham

C.S. Sec. 40 Ch. & Inch

No. 725

