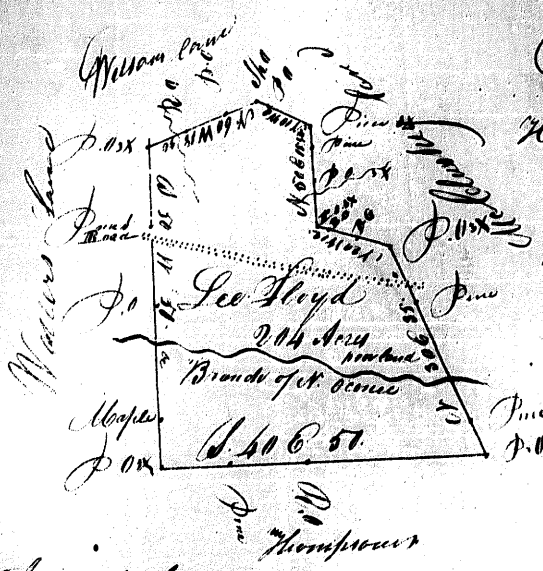


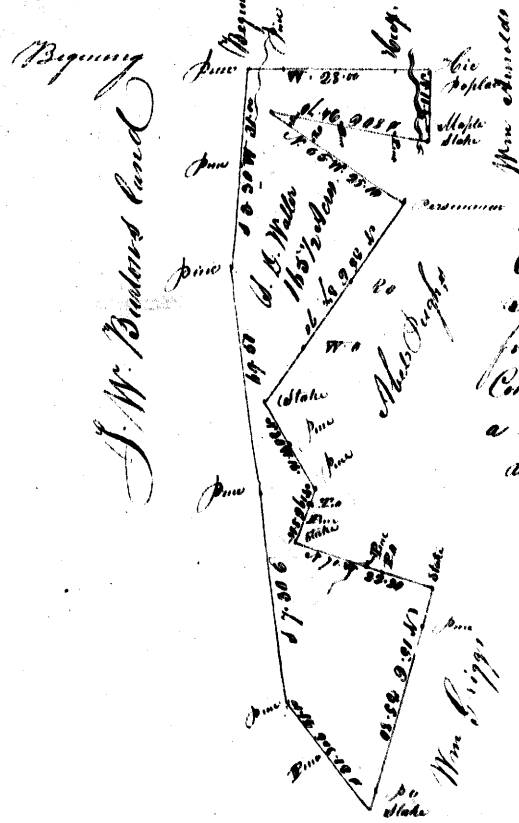
Scale 20 Chs per Inch



Georgia
 Hall County } Warrant dated 3rd May 1829
 Surveyed 16th June 1829
 for Lee Floyd who resides in the
 State a Tract of land containing
 Five hundred and four Acres
 Bounded by Thompson Water, McCaskey
 and Wilson land
 having such form and marks
 as the above plat represents
 By B. Griffith Esq.

Joseph Lane
 John Lane

Peaveys land



Scale of 20 Chs per Inch

Georgia
 Hancock County

Warrant dated 8th day of January 1831
 Surveyed 28th day of July 1831
 for Samuel D. Miller a tract of Land
 Containing One hundred and sixty five and
 a half Acres, having such shape and marks
 as the above plat represents

By John B. Radney D^{ist}
 Surveyed by Smith & Sanders Esq

Wm. D. Smith & Co.
 Thos. D. Smith & Co.
 Attest 28th July 1831