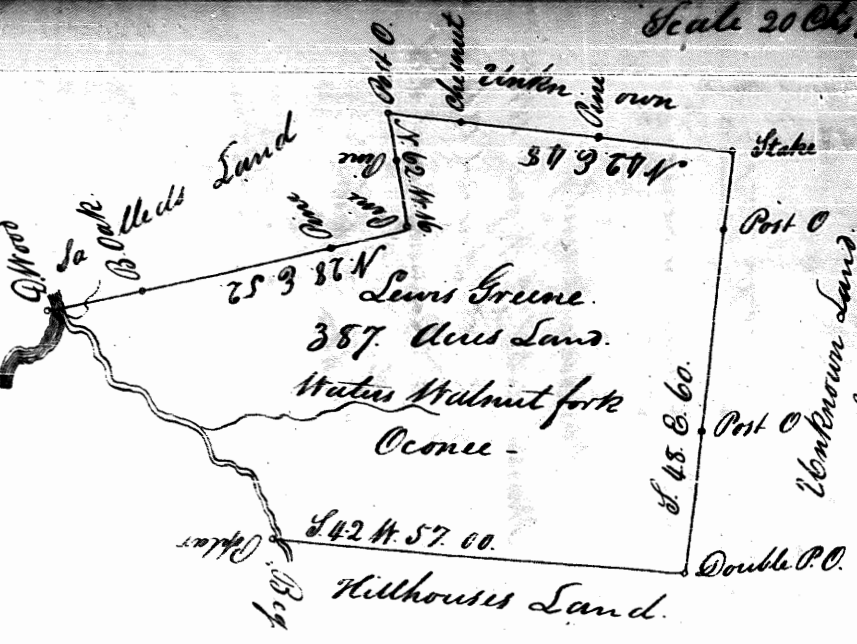
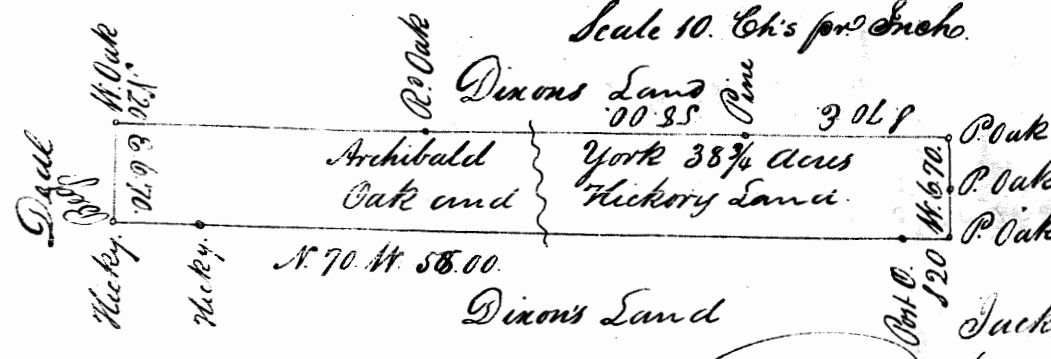


Scale 20 Ch's per Inch.



Warrant dated 5th January 1801.
 Surveyed 10th January 1801.
 By Jas. Rice
 John Greene Esq.

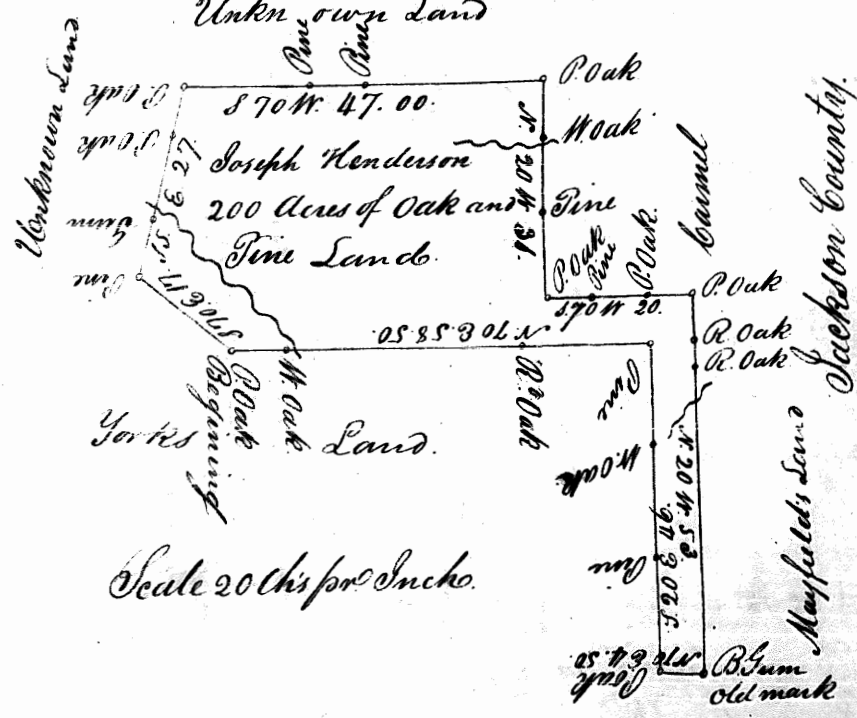
Scale 10 Ch's per Inch.



Warrant dated 5th September 1808.
 Surveyed 13th September 1808.
 By Joseph Cunningham Esq.

Sam^l Dixon Esq.
 Arch^d York Esq.

Unkn own Land



Warrant dated 3rd April 1815.
 Surveyed 6th April 1815.
 By Joseph J. Cunningham Esq.
 John & Watkins Esq.
 Benj. Watkins Esq.

Scale 20 Ch's per Inch.